

Palestinian Olive Agony

2013

A Statistical Report on Israeli Violations



Human Rights Department
Land Research Center
Arab Studies Society / Jerusalem



LRC

April - 2014



LRC

Land Research Center

Halhul - Hebron

Palestine

Tel.: +970 - 2 - 2217239

Fax: +970 - 2 - 2290918

E-mail: lrc@palnet.com

Web Page: www.lrcj.org

This study is prepared as part of the project entitled “Addressing the Geopolitical Changes in the Occupied Palestinian Territory”.

The content of the report does not reflect the donor's.

For more information, Please visit the following web pages:

www.lrcj.org

www.poica.org



Colonial Israeli Attacks on Palestinian Olive in 2013

“(I Swear) By the fig and (by) the olive (1) And [I Swear by] Mount Sinai (2) And [I Swear by] this secure land [of the city of Makkah], (3)”

Surah At Tin, verses 1-3

Allah swears by and blesses fig and olive trees in reference to their abundant benefits and great importance especially in Palestine, where Jesus was born. The olive tree, in particular, is a symbol of peace, civilization, identity and history. Its value has accumulated throughout the years until it became like deeds, proving that the land is Arab and Palestinian.

The Palestinian trees are not spared from the Israeli occupation onslaughts however. The olive trees are a constant target to the occupation. There is no other tree in history that has witnessed the ferocious attack the olive tree in Palestine underwent and is still undergoing. The olive tree stands for love, endowment and Palestinians' very existence. This is why it is targeted by colonists, especially by “price-taggers” * who have formed radical and racial groups to attack the tree among others. Almost all olive groves around the Israeli colonies have come under attack by those right-wing groups who torch and/or uproot and/or steal and/or intoxicate the olive trees.

In recent years, attacks against olive groves and farmers have not changed much in technique; in 2013, a total of 158 attacks that took place in the West Bank including the Occupied City of Jerusalem were recorded by LRC; these attacks included:

- ★ Of all the (158) attacks recorded, (136) were carried out by colonists in colonies nearby the targeted olive groves and the rest (22) were perpetrated by the Israeli occupation Army. The rate of attacks is 8% higher than the previous year (2012).
- ★ (16,688) olive trees were damaged;
 - * (5,393) trees were soaked in sewage while (6,677) were uprooted or cut down, (1,575) were plowed, (2,414) trees were set alight, and (629) were killed using chemicals.
 - * (10,863) were irreversibly destroyed while the rest (5,825) were partially damaged.
 - * (2,785) trees were (5-10) years of age while (4,776) were seedlings and (9,127) were centuries-old trees.
- ★ Not to mention that (2,790) trees were stolen after being uprooted to be replanted in the Israeli colonies and (2,104) were threatened of being uprooted under the pretext of “saving nature”!!

* Price-tag groups are terrorist gangs of extremist right wing activists carrying out systematic and/or <strategic> attacks all over the West Bank, including Jerusalem, and the 1948-occupied Palestine under the protection and support of the Israeli Army. The price-tag campaign includes attacks on Palestinian-owned property like lands, crops and vehicles as well as attacks on religious sites and writing offensive and enticing slogans among others.

Table 1: Ravaged trees in the West Bank (including the Occupied City of Jerusalem) during 2013:

Governorate	Ravaged trees					Perpetrators		Total
	Sewage	Uprooted/ cut down	Plowed	Burned	Toxin	The Israeli Occupation Army	Colonists	
Jerusalem	1,120	0	300	20	0	5	4	1,440
Hebron	0	2,155	733	414	50	8	17	3,352
Bethlehem	2,060	358	110	520	0	1	17	3,048
Ramallah	250	523	0	668	56	0	28	1,497
Jericho	0	0	0	0	0	0	0	0
Nablus	1,010	2,306	200	526	523	1	39	4,565
Salfit	474	163	113	180	0	2	14	930
Qalqiliya	309	193	119	86	0	2	12	707
Tubas	0	0	0	0	0	0	0	0
Tulkarm	0	0	0	0	0	0	0	0
Jenin	170	979	0	0	0	3	5	1,149
Total	5,393	6,677	1,575	2,414	629	22	136	16,688
	16,688					158		

Source: Field Observations – Monitoring Israeli Human Rights Violations Team – LRC, 2013

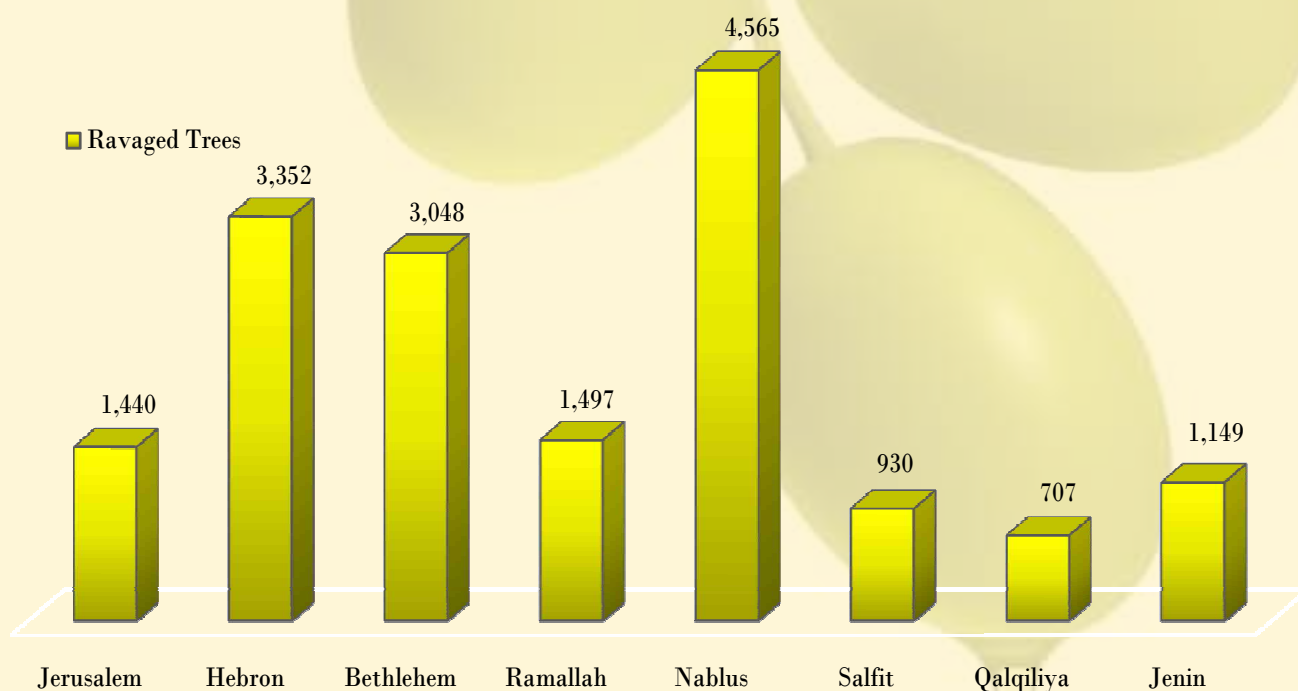


Table 2: Sewage attacks on olive fields:

Location	Colony/ military camp	Damaged area (dunum)	Damaged trees	Remarks
Kharayib Umm al Lahim	Har Adar	214	1000	Kharayib Umm al Lahim is located between Beit Anan and Beit Loqya. A sewage pipeline coming from Har Adam penetrates agricultural lands in the area leading to burning and poisoning the plants. The sewage piled up during winter is disposed in the village lands via sewers.
Nabi Samuel	Har Samuel	3	120	3 dunums soaked in sewage
Jerusalem		217	1120	
Wadi Al Abiar- Al Khadr	Efrat	3	60	Intermittent stream
Nahhalin- Ein Farris	Betar Elite	500	2000	Sewage pumped 3 times in 2013
Bethlehem		629	2060	
Al Mazra'a Al Qibliya	Horsha	22	80	Perennial stream
Wad Sakran, Nahhalin	Beit Arye	13	40	Intermittent stream
Al Luban Al Gharbi	Efrayim	15	60	Intermittent stream
Al Janieh	Dolev	14	70	Intermittent stream
Ramallah		136	250	

Continued...

Location	Colony/ military camp	Damaged area (dunum)	Damaged trees	Remarks
Al Khalla & Ras Qabos, Sabastiya	Shavei Shomron	35	500	Intermittent stream
Salim, Deir al Hatab	Allon Moreh	35	120	Intermittent stream
'Awarta	Itamar	39	180	Perennial stream
Sabastiya	Shavei Shomron	40	110	Intermittent stream
Turmus'ayya and Qaryut	Eli	30	60	Intermittent stream
Qaryut and Talfit	Shilo	11	40	Intermittent stream
Nablus		190	1010	
Bruqin and Kafr Ad Dik	Ariel	50	100	Perennial stream
Bruqin	Ariel	100	60	Perennial stream
Wadi al Matwi	Ariel	50	100	Intermittent stream
Mas-ha	Etz Efrayim	17	60	Intermittent stream
Salfit and Bruqin	Ariel	90	120	Perennial stream
Bruqin	Bruchin	15	34	Intermittent stream
Salfit		361	474	

Continued...

Location	Colony/ military camp	Damaged area (dunum)	Damaged trees	Remarks
Jinsafut	Emanuel	40	60	Intermittent stream
Kafr Laqif	Karne Shomron	38	100	Intermittent stream
Deir Istiya	Revava	39	45	Intermittent stream
Ras Tira & ad Dab'a	Alfei Menashe	46	70	Intermittent stream
Beit Amin	Shaare Tikva	30	34	Intermittent stream
Qalqiliya		213	309	
Jalbun	Ma'ale Gilboa	23	50	Intermittent stream
Umm ar- Rihan	Shaked	31	120	Perennial stream
Jenin		111	170	
Total		1868	5393	

Source: Field Research- Monitoring Israeli Violations Team- Land Research Centre, 2013

Colonists of Hayovel Rahel rendered 78 olive trees fully damaged in Qaryut, Nablus- March 12, 2013



Table 3: Torched olive trees - by governorate:

Governorate	Total	Damage		Age (year)			Perpetrators	
		Full	Partial	Seedlings (1-5)	(5-10)	Above (10)	The Israeli Occupation Army	Colonists
Jerusalem	20	20	0	0	0	20	0	1
Hebron	414	279	135	0	2	412	1	2
Bethlehem	520	450	70	70	0	450	0	5
Ramallah	668	181	487	0	0	668	0	3
Jericho	0	0	0	0	0	0	0	0
Nablus	526	404	122	0	0	526	0	9
Salfit	180	180	0	0	0	180	0	1
Qalqiliya	86	56	30	0	0	86	0	2
Tubas	0	0	0	0	0	0	0	0
Tulkarm	0	0	0	0	0	0	0	0
Jenin	0	0	0	0	0	0	0	0
Total	2,414	1,570	844	70	2	2,342	1	23

Source : Field Research- Monitoring Israeli Violations Team- Land Research Centre, 2013

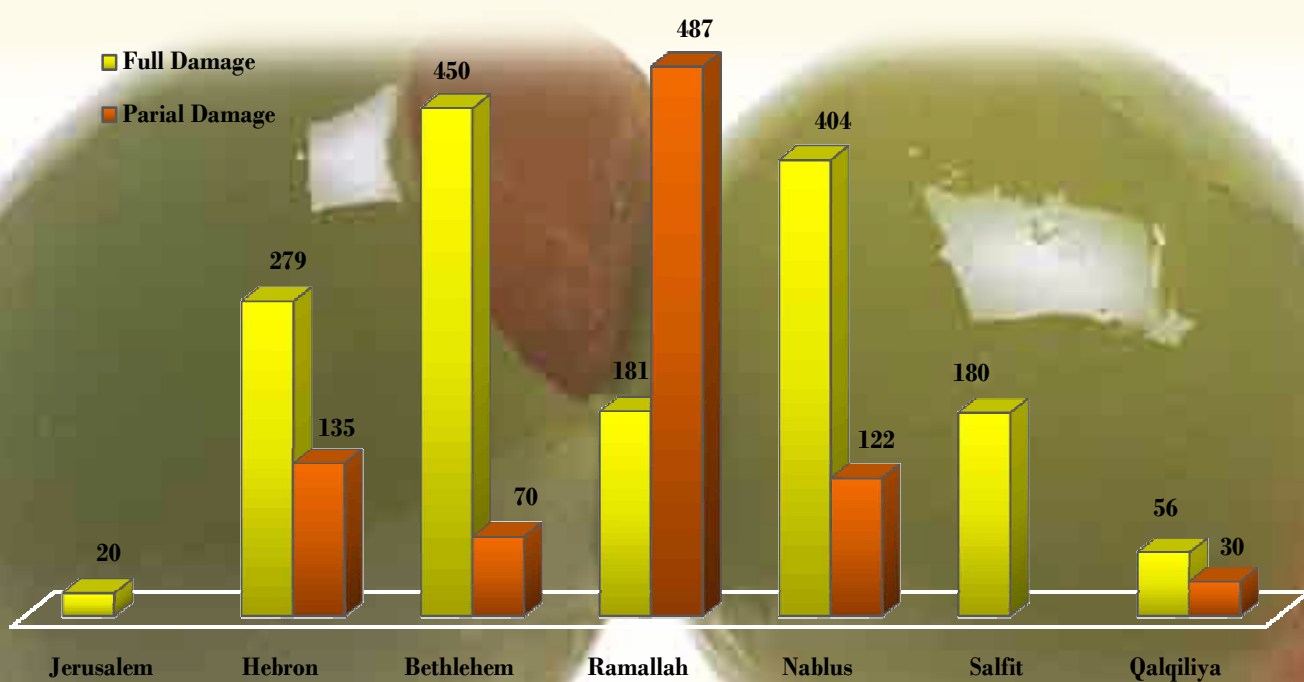


Table 4: Plowed trees - by governorate:

Governorate	Total	Damage		Age (year)			Perpetrators	
		Full	Partial	Seedlings (1-5)	5-10	Above (10)	The Israeli Occupation Army	Colonists
Jerusalem	300	300	0	0	0	300	5	0
Hebron	733	733	0	703	0	30	2	0
Bethlehem	110	60	50	0	0	110	1	2
Ramallah	0	0	0	0	0	0	0	0
Jericho	0	0	0	0	0	0	0	0
Nablus	200	200	0	0	0	200	0	1
Salfit	113	113	0	0	13	100	0	2
Qalqiliya	119	75	44	75	0	44	2	0
Tubas	0	0	0	0	0	0	0	0
Tulkarm	0	0	0	0	0	0	0	0
Jenin	0	0	0	0	0	0	0	0
Total	1,575	1,481	94	778	13	784	10	5

Source: Field Observations – Monitoring Israeli Human Rights Violations Team – LRC, 2013

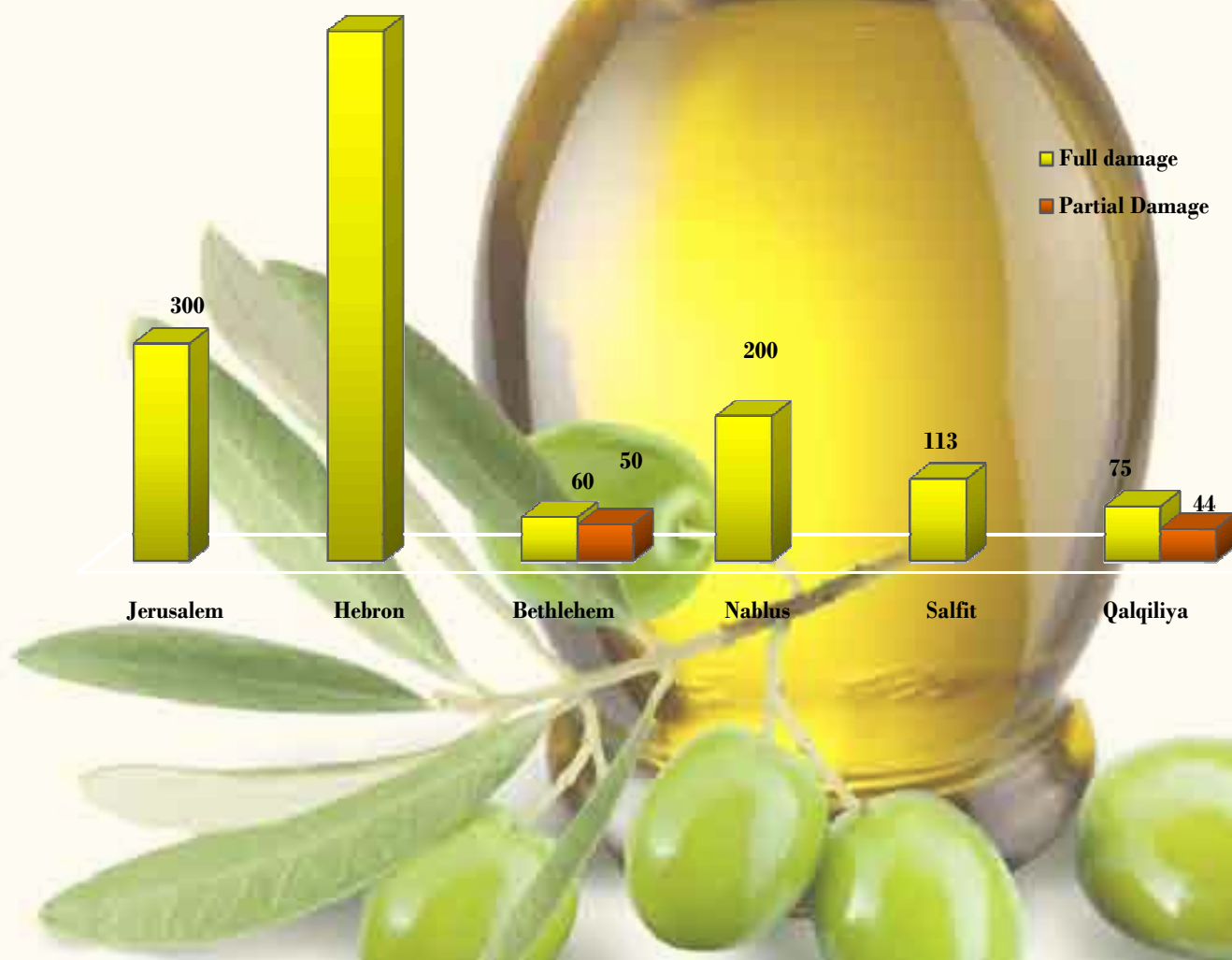


Table 5: uprooted or cut down trees - by governorate:

Governorate	Total	Damage			Age (year)			Perpetrators	
		Uprooted	Cut down	Theft	Seedlings (1-5)	5-10	More than 10	The Israeli Occupation Army	Colonists
Jerusalem	0	0	0	0	0	0	0	0	0
Hebron	2155	1383	772	1030	1873	36	246	3	15
Bethlehem	358	248	110	50	242	0	116	0	5
Ramallah	523	218	305	0	102	24	397	0	15
Jericho	0	0	0	0	0	0	0	0	0
Nablus	2306	1276	1030	500	681	461	1164	1	21
Salfit	163	40	123	0	40	0	123	1	2
Qalqiliya	193	170	23	0	132	0	61	0	4
Tubas	0	0	0	0	0	0	0	0	0
Tulkarm	0	0	0	0	0	0	0	0	0
Jenin	979	612	367	500	0	900	79	1	1
total	6,677	3,947	2,730	2,080	3,070	1,421	2,186	6	63

Source: Field Observations – Monitoring Israeli Human Rights Violations Team – LRC, 2013

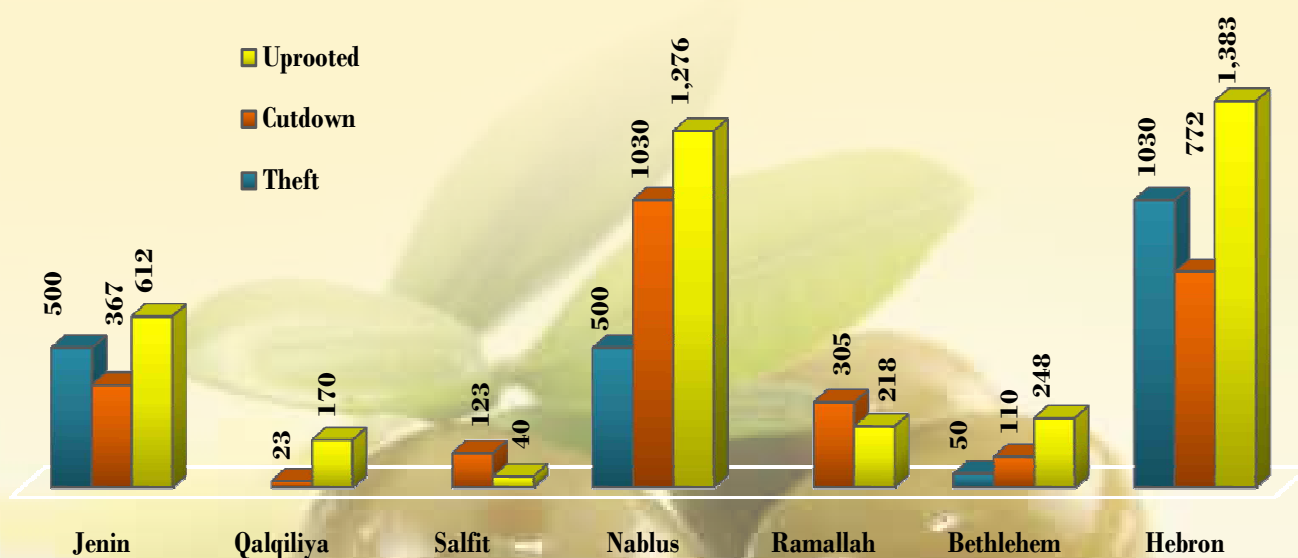


Table 6: Perpetrators and number of attacks:

No.	Perpetrator	Attacks
1	The Israeli occupation Army	22
2	Colonists of Yitzhar	15
3	Colonists of Talmon	3
4	Colonists of Nahliel	7
5	Colonists of Shvut Rahel and its outposts of Adi Ad and Yish Kodesh	12
6	Colonists of Kfar Tapuah	1
7	Colonists of Eli and its outposts of Ras Mois and Zahav	3
8	Colonists of Asfar	1
9	Colonists of Efrat	3
10	Colonists of Neve Daniyyel	2
11	Colonists of Neve Oranim and its outpost of Gilad Zohar	5
12	Colonists of Sha'ar Benyamin	2
13	Colonists of Allon Moreh	2
14	Colonists of Revava	1
15	Colonists of Emanuel	2
16	Colonists of Betar Illit	6
17	Colonists of Maon	6
18	Colonists of Bet Ain- Tsoref	3
19	Colonists of Ramat Yishai	1
20	Colonists of Gavot	1
21	Colonists of Susiya	2
22	Colonists of Gilo	1
23	Colonists of Ariel	4
24	Colonists of Ofra	3
25	Colonists of Kiryat Arba' and its outpost of Giv'at Ghal	1
26	Colonists of Har Homa	1
27	Colonists of Itamar	3
28	Colonists of Ahya	2
29	Colonists of Karne Shomron and Maale Shomron	5
30	Colonists of Shekef	1

Continued...

No.	Perpetrator	Attacks
31	Colonists of Har Adar- Givat HaRadar	1
32	Colonists of Ofarim	2
33	Colonists of Beit Haggi	1
34	Colonists of Barkan Industrial Park	1
35	Colonists of Peduel	1
36	Colonists of Nof Zion	1
37	Colonists of Shaare Tikva	1
38	Colonists of Etz Efrayim	1
39	Colonists of Karmeil Zur	1
40	Colonists of Kohav Hashyar	1
41	Colonists of Shilo	7
42	Colonists of Shave Shomron	5
43	Colonists of Bruchin	3
44	Colonists of Elkana	1
45	Colonists of Havat Gilad	1
46	Colonists of Mevo Dotan	1
47	Colonists of Atarot	1
48	Colonists of Har Samuel	1
49	Colonists of Pisgat	1
51	Colonists of Beit Arye	1
52	Colonists of Maale Israel	1
53	Colonists of Alfei Menashe	1
54	Colonists of Salit	1
55	Colonists of Shaked	1
	Total	158

Source: Field Observations – Monitoring Israeli Human Rights Violations Team – LRC, 2013

1:500,000

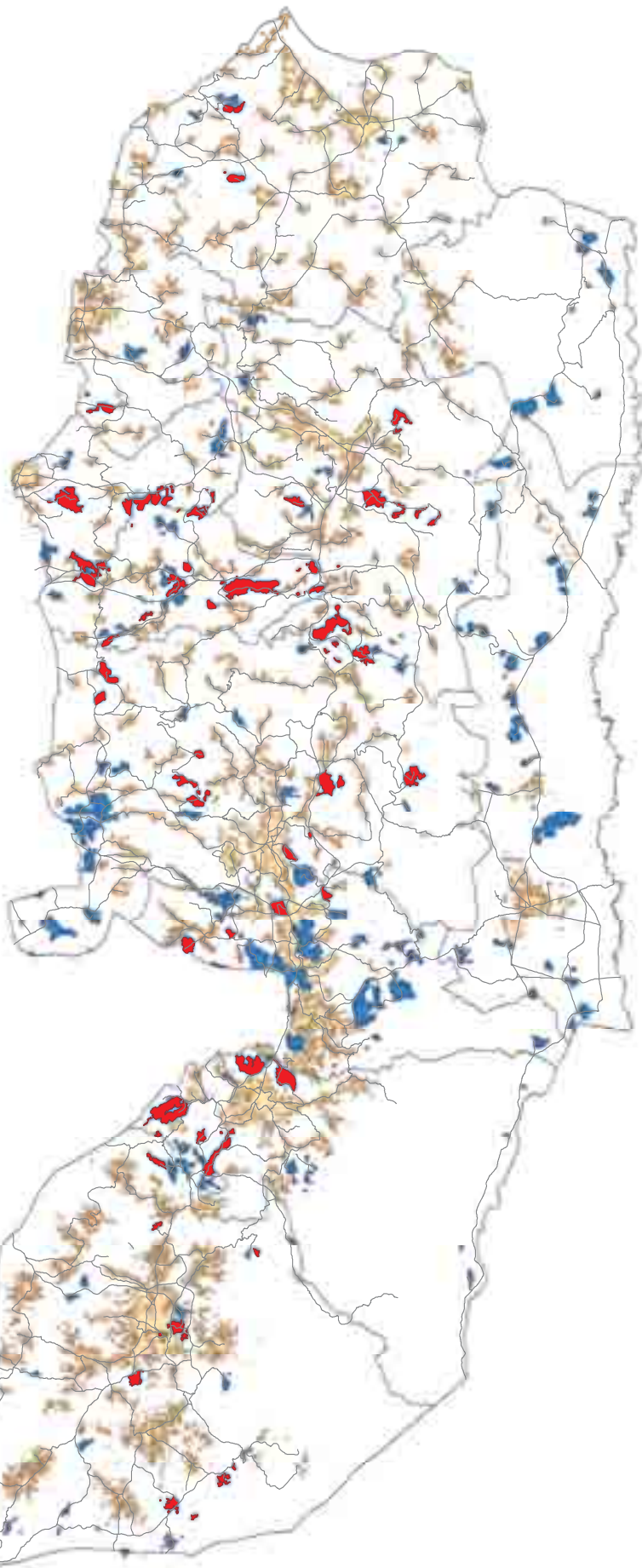


Table 7: Estimated losses in the olive sector due to Israeli attacks:

Governorate	Fully damaged trees by age			Partially damaged trees by age			Estimated losses - fully damaged trees			Estimated losses - partially damaged trees		
	Seedlings (1-5)	(5-10)	More than (10)	Seedlings (1-5)	(5-10)	More than (10)	Seedlings (1-5)	(5-10)	More than (10)	Seedlings (1-5)	(5-10)	More than (10)
Jerusalem	101	168	723	67	112	269	514,342.5	802,032	3,137,820	504,17.5	113,792	390,050
Hebron	1,944	40	463	682	0	225	9,899,820	190,960	2,009,420	513,205	0	326,250
Bethlehem	427	309	1,258	194	206	654	2,174,497.5	1,475,166	5,459,720	145,985	209,296	948,300
Ramallah	124	45	436	15	42	835	631,470	214,830	1,892,240	11,287.5	42,672	1,210,750
Jericho	0	0	0	0	0	0	0	0	0	0	0	0
Nablus	771	221	2,017	61	493	1,002	3,926,317.5	1,055,054	8,753,780	45,902.5	500,888	1,452,900
Salfit	83	84	451	28	47	237	422,677.5	401,016	1,957,340	21,070	47,752	343,650
Qalqiliya	235	46	205	19	31	171	1,196,737.5	219,604	889,700	14,297.5	31,496	247,950
Tubas	0	0	0	0	0	0	0	0	0	0	0	0
Tulkarm	0	0	0	0	0	0	0	0	0	0	0	0
Jenin	15	624	73	10	317	108	76,387.5	2,978,976	316,820	7,525	322,072	156,600
total	3,700	1,537	5,626	1,076	1,248	3,501	18,842,250	7,337,638	24,416,840	809,690	1,267,968	5,076,450
	10,863 trees			5,825 trees			NIS 50,596,728.0			NIS 7,154,108.0		
	Damaged trees 16,688						Estimated loss USD 16,500,238.9 ~ NIS 57,750,836.0					

Source: Estimated loss calculation was done by LRC team - Jerusalem, 2013

notes:

- An olive tree is considered productive when it reaches (40) years of age.
- productivity levels are assumed to be (28) kg per tree per season.