

Palestinian Olive Agony

2014

(A Statistical Report on Israeli Violations)



Prepared by

Monitoring Israeli Violations Team

Land Research Center

Arab Studies Society- Jerusalem



March 2015

The Land Research Center (LRC) – an overview

Is a nongovernmental, non-profit organization that was established in 1986 as part of the Arab Studies Society. LRC's activities cover all the West Bank, including Jerusalem, as well as the Gaza Strip. It has branches in Hebron, Ramallah, and Nablus.

LRC's Programs

- **The Human Rights Program:** It is viewed as one of the most crucial programs implemented on the national level. The program aims to monitor Israeli violations of Palestinians rights, gather detailed and precise information in this regard and make the information available to people all over the world in order to garner more support and mobilize solidarity with the Palestinian cause.
- **Sustainable development program**
This program aims at fostering the development of Palestinian land and people through implementing activities that achieve sustainable development via developing natural resources that include and are not limited to lands development, nature preserve and water management & best use.
- **Researches and Studies, and Maps and Geographic Information System (GIS)**
This program focuses on preparing, producing and providing valid scientific information, studies, and applicable researches relative to the center's various activities. Studies and researcher- supported by the maps and aerial photos of Maps and Geographic Information System (GIS)- include and are not limited to soil preserve, lands development, vegetation, and bio-diversity.



Land Research Center

Halhul - Hebron

Palestine

Tel.: +970 - 2 - 2217239

Fax: +970 - 2 - 2290918

E-mail: lrc@palnet.com

Web Page: www.lrcj.org

This study is prepared as part of the project entitled "Monitoring Israeli Settlements Activities in the Occupied Palestinian Territory".

The content of the report does not reflect the donor's.

For more information, Please visit the following web pages:

www.lrcj.org

www.poica.org



Humans, Trees and Stones, We are all steadfast

The Bethlehem village of Al-Walaja accommodates the oldest olive tree in the world since over 5500 years; it is a historical indication on the fusion between the holy land and the sacred tree.

What was mentioned throughout this report is the documentation of all violations against olive trees in the area of the West Bank; the hot spots of many violations took place in the peripheries of radical colonies. For example, Citizen Abdelrahman Rajab and his son from the village of Kfar Al-Labad were beaten up by colonists after they were done with olive picking; Rajab was hospitalized for three days and his 250kg harvest and donkey were stolen and moved to the nearby colony.

The damage that followed Palestinian olives is not limited to colonists' attacks and violations but it extends to the Israeli occupation army and troops. The occupation practices and laws, colonists and army troops' attacks and violations, and the apartheid wall are the chain that affects olive trees. First of all, the Israeli occupation bans agricultural pesticides under the claim of security purposes; it also imposes complications on exporting Palestinian olive products overseas, not mentioning the low-price and low-quality mixed olive oil that comes from the occupied territories of 1948. Secondly, colonists and army troops' violations and attacks are a clear example on how vicious and inhumane they are against olive trees. Lastly, the apartheid wall has isolated more than 40,000 agricultural dunums whose owners are denied access to them throughout the year except for certain times with the need to obtain a specific permit. Farmers have to wait for long hours at the doors leading to the isolated lands; it should be marked that farmers (more than 60 years only) have limited time inside of their lands.

On this land, we and our olive trees are staying and resisting all together; despite torching, cutting down and uprooting, olive trees will grow up stronger one more time. We will plant tens of trees in place of the stolen ones for the land is Palestinian and will always remain so. The anemone flowers growing under the trees of olive will always narrate the conflict between the gods of good and evil, and our women will embody these stories through Canaanite embroidered dresses. Proverbs will be circulated and songs will be sung relating to those everlasting stories.

This report in itself shows that there are still some people who follow up and document all the Israeli violations and attacks against humans and trees. Despite that payback is not similar in terms of possibility; history will never wipe out the vicious crimes and assaults of Israel, the documentation of which cost many their lives. It is of our pride to have organizations founded by martyrs, who died defending Palestine, such like Arab Studies Society in Jerusalem. Land Research Center LRC as part of the Arab Studies Society has been a pioneer in the field of documenting Israeli violations and popular steadfastness and resistance.

May Allah bless you and your endless efforts and until we raise the Palestinian flag over Al-Aqsa mosque again.

Fayad Fayad
General Director of Palestinian
Olive Council

Colonial Israeli Attacks on Palestinian Olive in 2014

“Do eat olive oil, and use it as an ointment for it comes out of a blessed tree” (Prophet Mohammad PBUH)

Not only the holy Quran mentioned the olive tree and its oil but also Prophet Mohammad (PBUH) recommended people to eat and use it as an ointment for the abundance of its benefits. Olive trees are considered a symbol of human civilization and a clear cut example on advancement, history and identity. Palestine and the olive tree are inseparable for this tree stands as an icon of the Arabism of Palestine and an ownership document of the land. Thus, the Israeli occupation targeted these trees in all possible ways, the most heinous of which was by looting aging trees and re-planting them inside of colonies and Jewish neighborhoods in an attempt to forge history, facts and civilization of their own.

The year 2014 witnessed the martyrdom of the kid Baha' Badir (13), who was shot by the occupation troops on his way home after being done with olive picking. Tens of violation cases against Palestinian farmers were documented to be carried out by colonists in an attempt to divert them from using land so that they take it over. Also, 250kg of olive fruits were looted in the aftermath of colonists' attacks on farmers.

Palestinians will never wipe out the memory of Minister Zeyad Abu Ein, who was killed by Israeli soldiers on camera at time of planting olive trees.

The year 2014 also witnessed the fencing of 200 dunums planted with olive trees in the Nablus village of Deir al-Hatab for the favor of colonists from Alon More colony. Another case was seen in the village of al-Yanun where colonists released their cows to graze in Palestinian lands planted with olive. Colonists' intention was to damage the olive groves ... This is exactly what they did by burning the kid Mohammad Abu Khdair alive.



Israeli violations did not differ from previous years; Israeli soldiers and colonists still send farmers out of their lands, cut down and uproot trees, and loot and move them to colonies. More than 125 attacks were reported to be carried out against olive trees where colonists set fire to the stocks of trees using cloth and flammable substances, sustaining full damage and burn down.

Occupational and colonial attacks against olive trees reached a new extreme to include torching, ravaging, poisoning, and sinking with waste and sewage water in different areas of the West Bank and East Jerusalem. Land Research Center LRC documented the Israeli attacks and violations against olive trees during 2014 as follows:

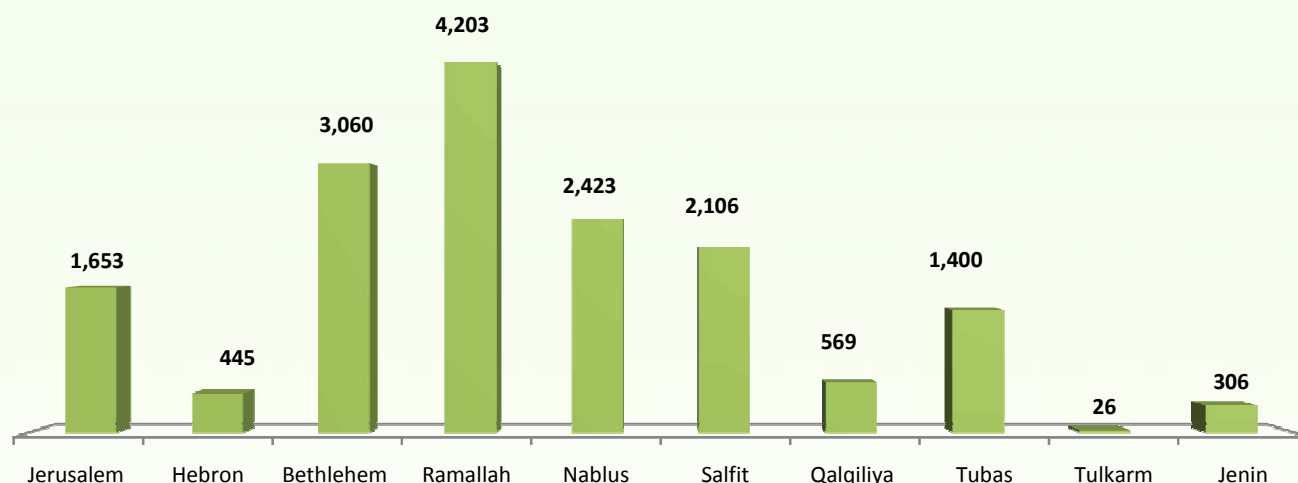
- ★ (125) attacks were recorded, of which (136) were carried out by colonists in colonies nearby the targeted olive groves and the rest (20) were perpetuated by the Israeli occupation Army.
- ★ (16,191) olive trees were damaged, of which (13, 681) were irreversibly affected as shown below;
 - 2416 trees were soaked in sewage while 8956 were uprooted or cut down, 1693 were plowed, 538 trees were set alight, and 78 were killed using chemicals.
 - 10,792 were irreversibly destroyed while the rest (2889) were partially damaged.
 - 1452 trees were 510- years of age while 7176 were seedlings and 5053 were centuries-old trees.
 - Not to mention that 5014 trees were stolen after being uprooted to be replanted in the Israeli colonies and (2510) were threatened of being uprooted under the pretext of «saving nature»!!



Table 1: Ravaged trees in the West Bank (including the Occupied City of Jerusalem) during 2014

Governorate	Damaged trees						Perpetrators		Total
	Soaked in sewage water	Uproot and cut down	Plowed	Torched	Intoxicated	Threatened of uproot	The Israeli occupation army	Colonists	
Jerusalem	1120	333	200	0	0	0	6	5	1653
Hebron	0	275	155	15	0	0	5	8	445
Bethlehem	30	2080	900	50	0	0	0	19	3060
Ramallah	184	3978	0	41	0	0	1	20	4203
Jericho	0	0	0	0	0	0	0	0	0
Nablus	410	547	0	388	78	1000	2	25	2423
Salfit	402	1256	308	30	0	110	2	14	2106
Qalqiliya	230	195	130	14	0	0	2	10	569
Tubas	0	0	0	0	0	1400	2	0	1400
Tulkarm	0	26	0	0	0	0	0	1	26
Jenin	40	266	0	0	0	0	0	3	306
Total	2416	8956	1693	538	78	2510	20	105	16191
							125		

*Source: Field Research- Monitoring Israeli Violations Team- Land Research Centre, 2014



The chart reflects the number of damaged trees by governorates



Table 2: Number of attacked olive trees via sewage water during 2014 by governorates including Jerusalem

Location	Colony/ Camp	Damaged area (dunum)	Affected olive trees	Remarks
Khirbet Umm al Lahim	Har Adar	214	1000	Intermittent stream in summer; perennial in winter
Nabi Samuel	Har Samuel	3	120	Intermittent stream
Jerusalem		217	1120	
Wad Fukin	Betar Illit	5	30	Intermittent stream
Bethlehem		5	30	
Al Mazra'a Al Qibliya	Horsha camp	13	18	Perennial stream
Al Lubban Al Gharbi	Beit Arye	13	40	Intermittent Stream
Al Lubban Al Gharbi and Abud	Efrayim	38	35	Intermittent Stream
Turmus'ayya	Eli	26	45	Perennial stream
Al Janieh	Dolev and Talmon	28	46	Intermittent Stream
Ramallah		118	184	

Cont..





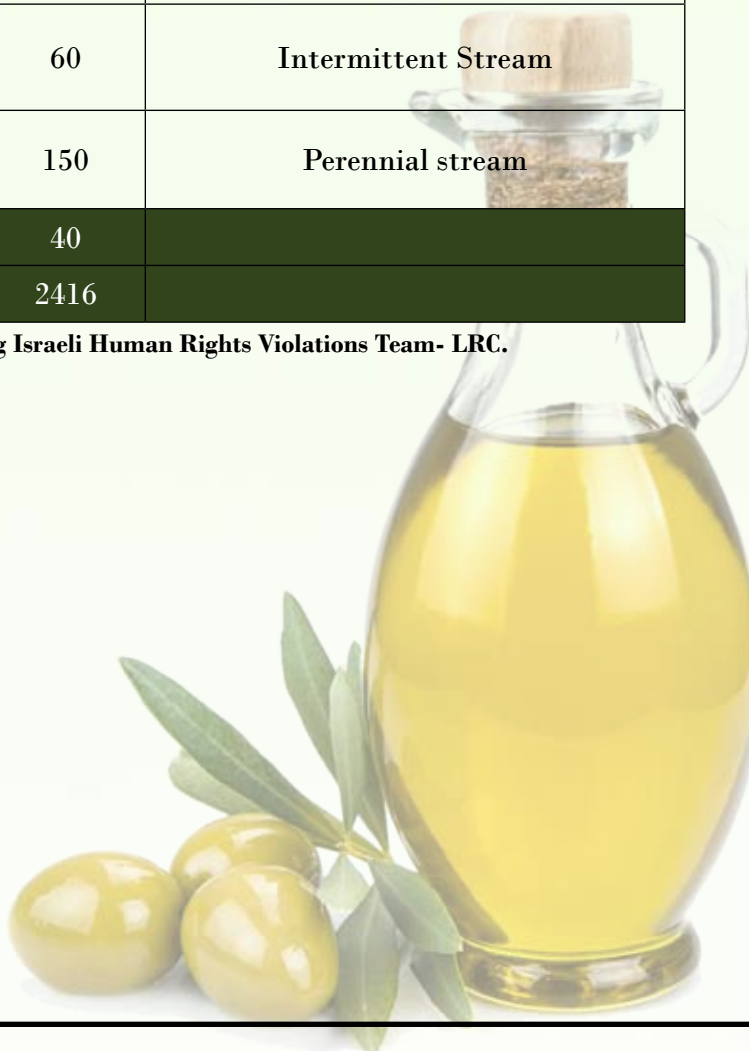
Location	Colony/ Camp	Damaged area (dunum)	Affected olive trees	Remarks
Salim, Deir al Hatab	Allon Moreh	48	180	Intermittent Stream
'Awarta	Itamar	21	39	Intermittent Stream
Sabastiya\ Ras Qabus	Shavei Shomron	20	11	Intermittent Stream
Turmus'ayya and Qaryut	Eli	30	60	Intermittent Stream
Qaryut and Talfit	Shilo	11	40	Intermittent Stream
Jalud and Qaryut	Shevut Rahel	15	80	Intermittent Stream
Nablus		145	410	
Qarawat Bani Hasan	Revava	5	80	Intermittent Stream
Qarawat Bani Hasan	Qiryat Efrayim	20	60	2km along with the bypass road no. 505
Masha	Etz Efrayim	17	60	Intermittent Stream
Salfit and Bruqin	Ariel	120	150	Perennial stream
Bruqin	Bruchin	15	40	Intermittent Stream
Marda	Ariel	12	18	Intermittent Stream
Salfit		189	402	

Cont..

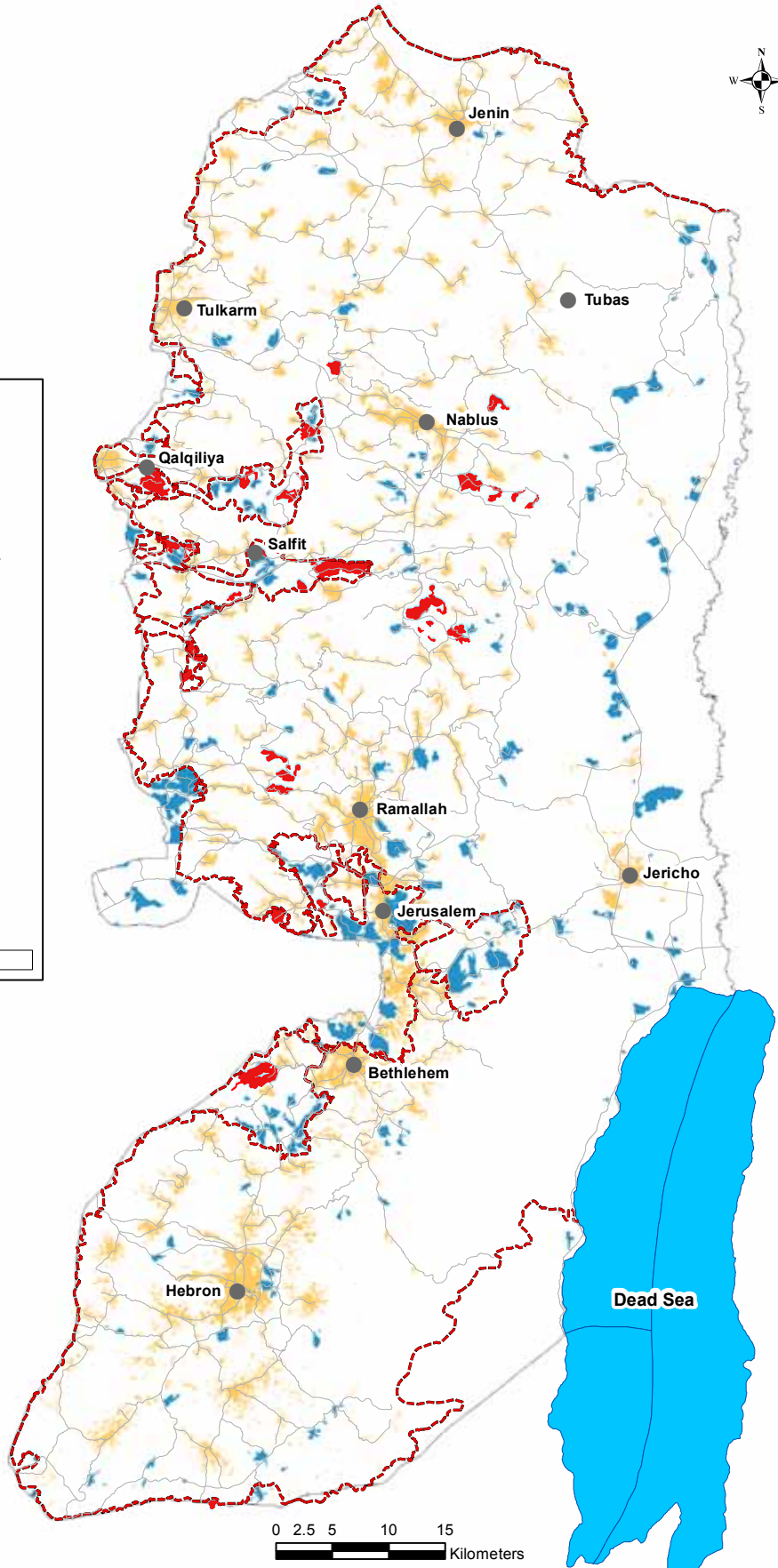
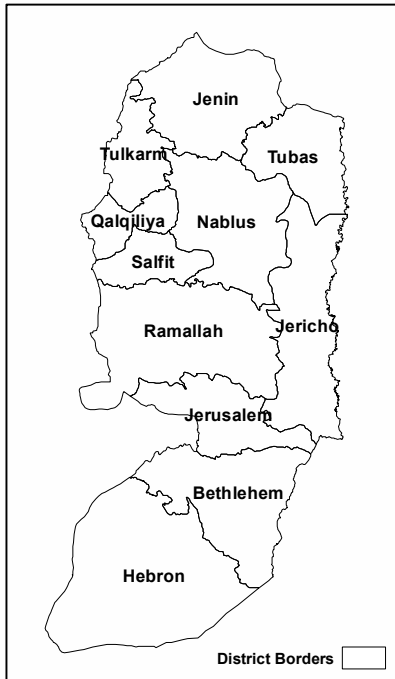


Location	Colony/ Camp	Damaged area (dunum)	Affected olive trees	Remarks
Jinsafut	Emanuel	80	60	Intermittent Stream
Kafr Laqif	Karne Shomron	40	60	Intermittent Stream
Deir Istiya	Revava	45	20	Intermittent Stream
Ras Tira and Ad Daba'a	Alfei Menashe	46	70	Intermittent Stream
Beit Amin	Sha'ar	20	0	Intermittent Stream
Kfar Qaddum	Kedumim	34	20	Intermittent Stream
Qalqiliya		265	230	
Eastern and Western Jalbun	Miraf	5	80	Intermittent Stream
Jalbun	Ma'ale Gilboa	20	60	2km along with the bypass road no. 505
Zububa	Salim camp	17	60	Intermittent Stream
Umm ar- Rihan	Shaked	120	150	Perennial stream
Jenin		84	40	
Total		1023	2416	

Source: Field Observations – Monitoring Israeli Human Rights Violations Team- LRC.



A map of the Israeli Colonies pumping Sewage Water into Olive Grooves-2014



Legend

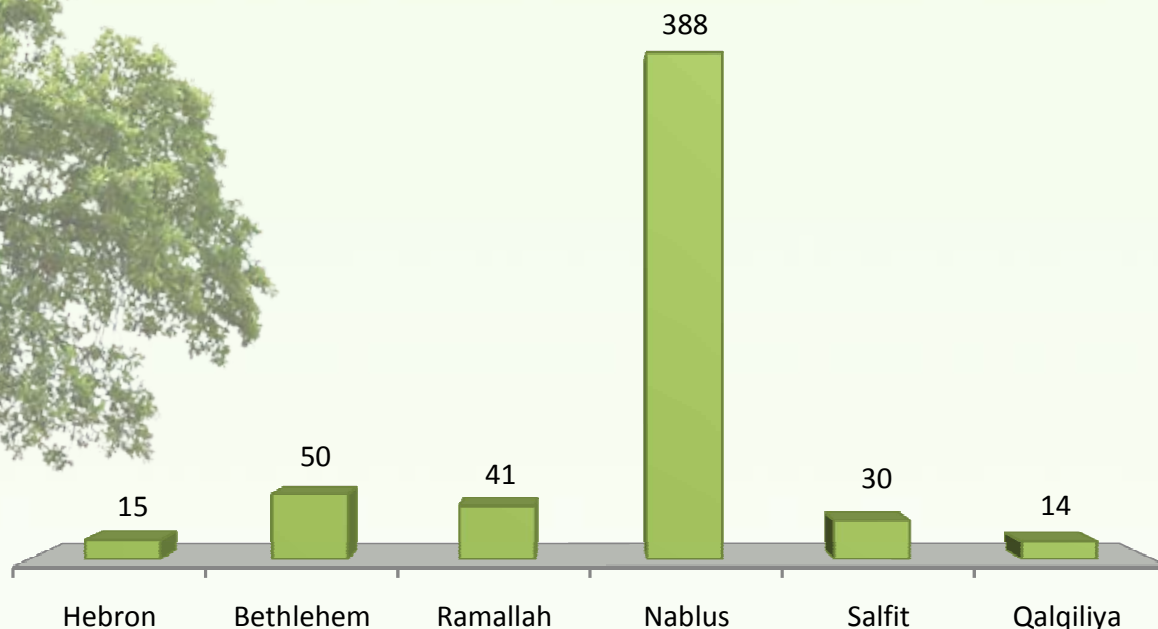
- Annex. & Exp. Wall
- Colonies pumping Sewage Water
- Israel Colonies
- Palestinian Built-up Area
- Dead Sea



Table 3: torched olive trees during 2014 - by governorate

Governorate	Total	Damage		Age (years)			Perpetrators	
		Full	Partial	Seedlings (15-)	(510-)	Above (10)	The Israeli occupation Army	Colonists
Jerusalem	0	0	0	0	0	0	0	0
Hebron	15	15	0	0	0	15	1	0
Bethlehem	50	50	0	50	0	0	0	1
Ramallah	41	41	0	0	0	41	1	1
Jericho	0	0	0	0	0	0	0	0
Nablus	388	388	0	0	0	388	0	7
Salfit	30	0	30	0	0	30	0	1
Qalqiliya	14	14	0	0	0	14	0	1
Tubas	0	0	0	0	0	0	0	0
Tulkarm	0	0	0	0	0	0	0	0
Jenin	0	0	0	0	0	0	0	0
Total	538	508	30	50	0	488	2	11

*Source : Field Research- Monitoring Israeli Violations Team- Land Research Centre, 2014



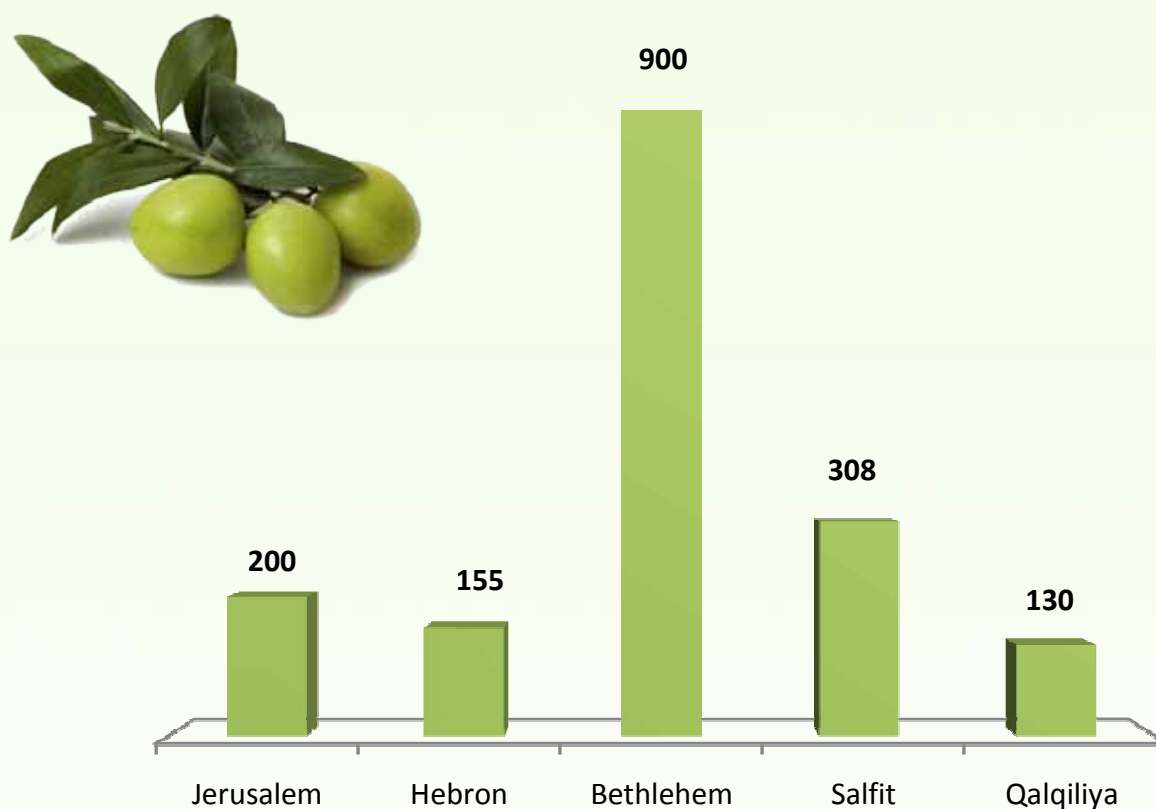
A graph illustrating the number of torched trees during 2014



Table 4: plowed trees during 2014 - by governorate

Governorate	Total	Damage		Age (years)			Perpetrators	
		Full	Partial	Seedlings (1- 5)	(5- 10)	Above (10)	The Israeli occupation Army	Colonists
Jerusalem	200	200	0	0	0	200	4	0
Hebron	155	155	0	50	60	45	3	1
Bethlehem	900	650	250	350	200	350	0	2
Ramallah	0	0	0	0	0	0	0	0
Jericho	0	0	0	0	0	0	0	0
Nablus	0	0	0	0	0	0	0	0
Salfit	308	308	0	0	0	308	0	3
Qalqiliya	130	130	0	130	0	0	2	0
Tubas	0	0	0	0	0	0	0	0
Tulkarm	0	0	0	0	0	0	0	0
Jenin	0	0	0	0	0	0	0	0
Total	1693	1443	250	530	260	903	9	6

*Source : Field Research- Monitoring Israeli Violations Team- Land Research Centre, 2014



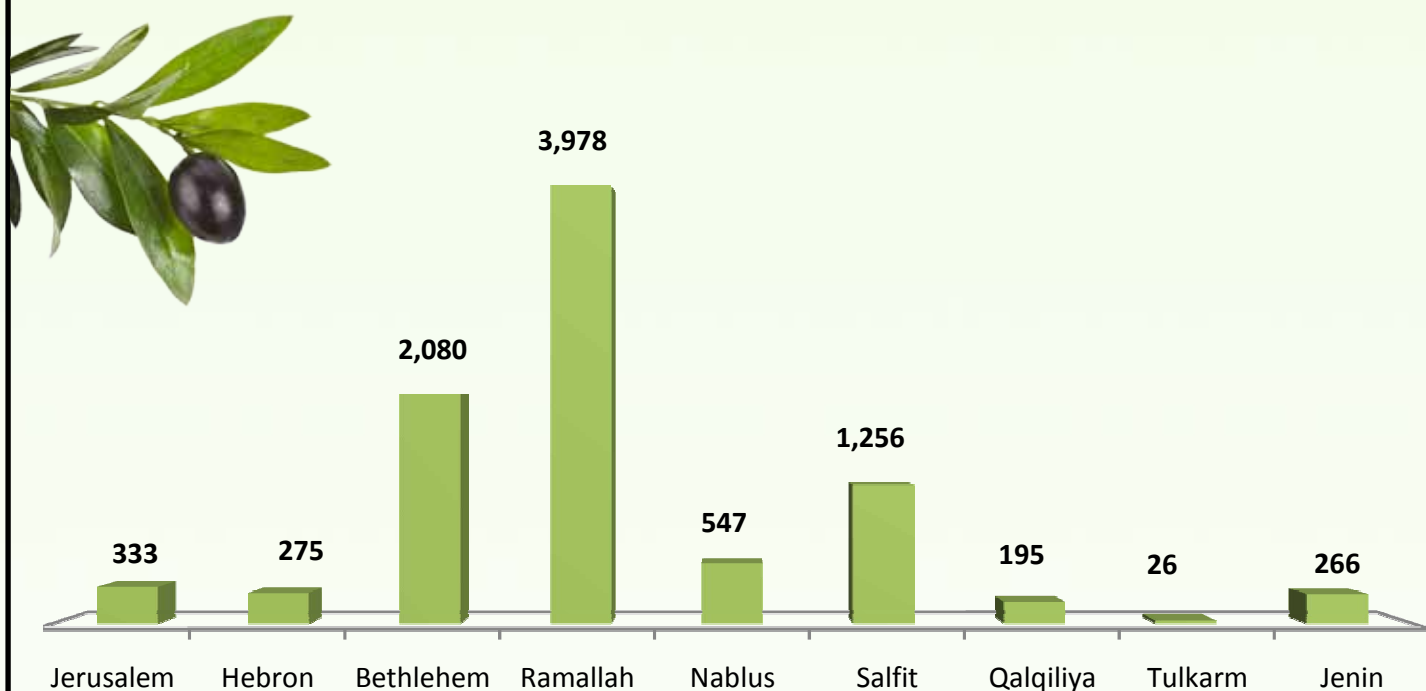
A graph illustrating the number of plowed trees during 2014



Table 5: uprooted or cut down trees during 2014- by governorate

Governorate	Total	Damage		Age (years)			Perpetrators	
		Uprooted	Cut down	Seedlings (1- 5)	(5 -10)	Above (10)	The Israeli occupation Army	Colonists
Jerusalem	333	290	43	25	25	283	2	3
Hebron	275	120	155	115	0	160	1	7
Bethlehem	2080	1260	820	780	435	865	0	17
Ramallah	3978	3930	48	3858	72	48	0	13
Jericho	0	0	0	0	0	0	0	0
Nablus	547	273	274	75	0	472	2	11
Salfit	1256	1028	228	1024	0	232	1	4
Qalqiliya	195	120	75	80	40	75	0	4
Tubas	0	0	0	0	0	0	0	0
Tulkarm	26	26	0	26	0	0	0	1
Jenin	266	266	0	250	16	0	0	2
Total	8956	7313	1643	6233	588	2135	6	62

*Source : Field Research- Monitoring Israeli Violations Team- Land Research Centre, 2014



A graph illustrating the number of cut down\uprooted trees during 2014

○ Other attacks:

Table 6: stolen and threatened of uproot olive trees during 2014- by governorates

Governorate	Stolen trees	Threatened of uproot
Jerusalem		
Hebron	0	0
Bethlehem	890	0
Ramallah	3600	0
Jericho	0	0
Nablus	0	1000
Salfit	158	110
Qalqiliya	150	0
Tubas	0	1400
Tulkarm	0	0
Jenin	216	0
Total	5014	2510

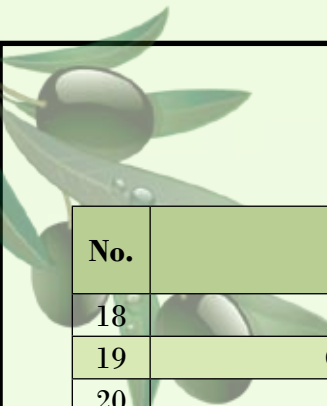
*Source : Field Research- Monitoring Israeli Violations Team- Land Research Centre, 2014

Table 7: perpetrators and number of attacks during 2014

No.	Perpetrators	No. of attacks
1	The Israeli occupation Army, Israel Authorities of Antiquities, Israel Nature Authority, Israel Civil Administration	20
2	Colonists of Yizhar	8
3	Colonists of Shvut Rahel and its outposts of Adi Ad and Yish Kodesh	7
4	Colonists of Neve Daniyyel and its outpost Sidi Boaz	7
5	Colonists of Talmon	4
6	Colonists of Betar Illit	4
7	Colonists of Eli and its outpost Heoval	4
8	Colonists of Beit Ein	4
9	Colonists of Itamar	4
10	Colonists of Kedumim and its outpost Har Hamid	3
11	Colonists of Shilo	3
12	Colonists of Revava	3
13	Colonists of Ariel	3
14	Colonists of Dolev	2
15	Colonists of Halmish	2
16	Colonists of Nof Zion	2
17	Colonists of Efrat	2

Cont..



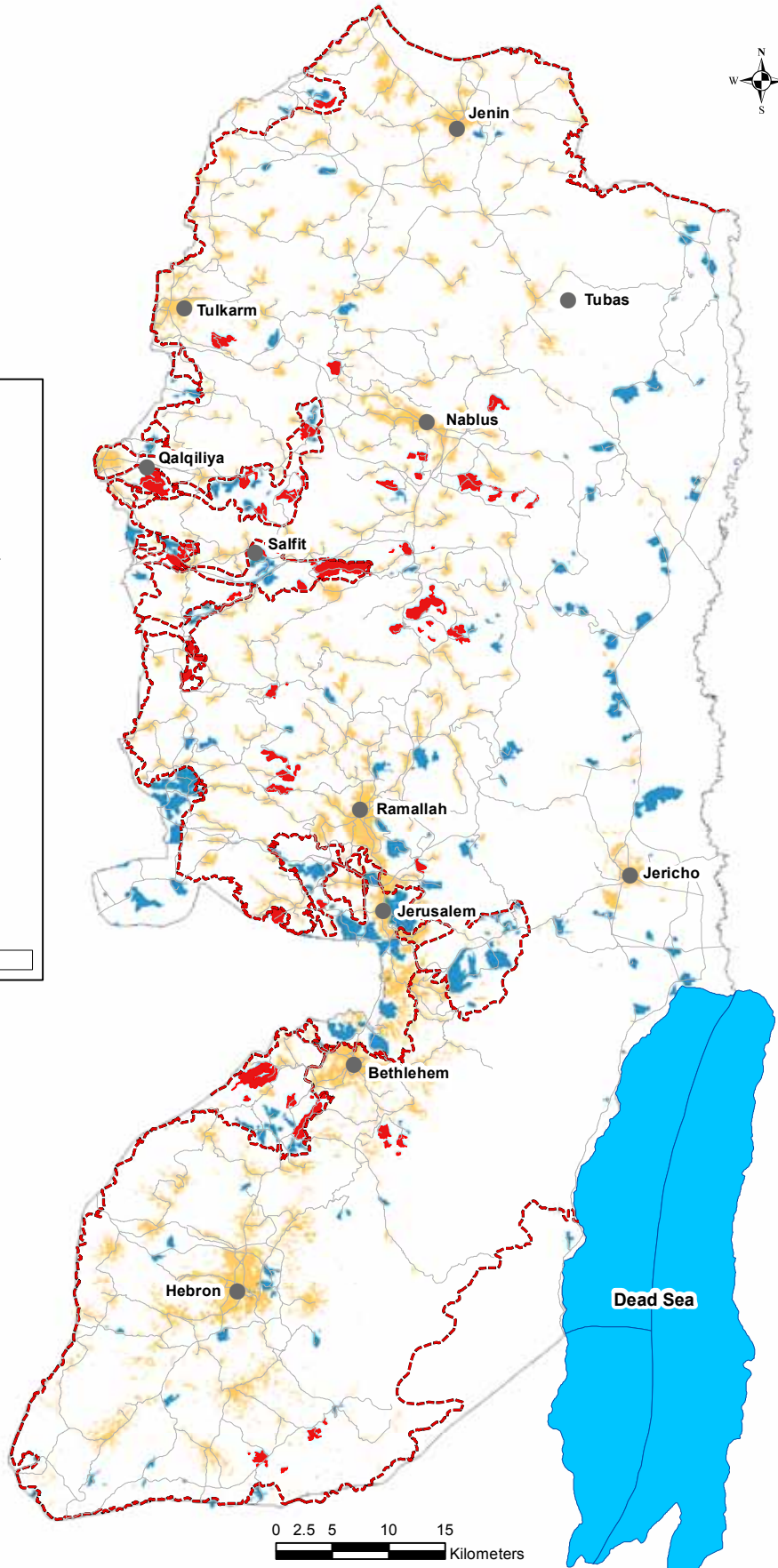
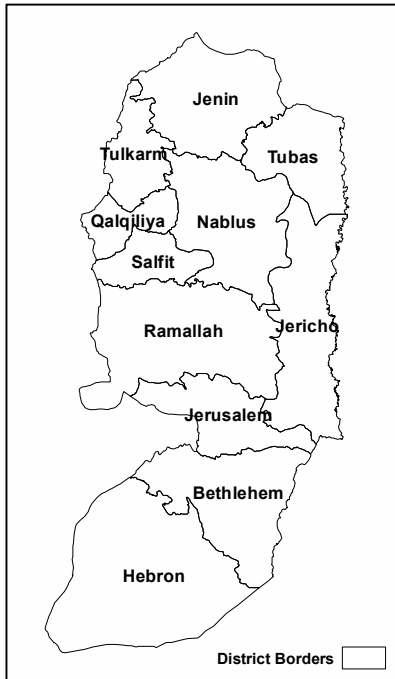


No.	Perpetrators	No. of attacks
18	Colonists of Emanuel	2
19	Colonists of Sha'ar Benyamin and its outpost Migron	2
20	Colonists of Susiya	2
21	Colonists of Givat Ronen	2
22	Colonists of Bruchin	2
23	Colonists of Shaked	2
24	Colonists of Efrat	2
25	Colonists of Kfar Tapuah	1
26	Colonists of Laishem	1
27	Colonists of Yakir	1
28	Colonists of Alon Moreh	1
29	Colonists of Ma'on	1
30	Colonists of Ramat Yashi	1
31	Colonists of Gab'ot	1
32	Colonists of Kiryat Netafim	1
33	Colonists of Avnei Hevitz	1
34	Colonists of Givat Gilad	1
35	Colonists of Zofen	1
36	Colonists of Karne Shamron	1
37	Colonists of Nokdim	1
38	Colonists of Har Adar	1
39	Colonists of Ofarim	1
40	Colonists of Avegil	1
41	Colonists of Bracha	1
42	Colonists of Heoval	1
43	Colonists of Male Levona	1
44	Colonists of Etzfrarim	1
45	Colonists of Shavi Shamron	1
46	Colonists of Elkana	1
47	Colonists of Havat Ariel	1
48	Colonists of Mevo Dotan	1
49	Colonists of Tuqu'	1
50	Colonists of Har Samuel	1
51	Colonists of Beit Areih	1
52	Colonists of Male Israel	1
53	Colonists of Alfei Menashe	1
Total		125

*Source : Field Research- Monitoring Israeli Violations Team- Land Research Centre, 2014



A map of the perpetrator Colonies against Olive Groves-2014



Legend

- Annex. & Exp.Wall
- Colonies against Olive Groves
- Israel Colonies
- Palestinian Built-up Area
- Dead Sea





Table 8: Estimated losses in the olive sector due to Israeli attacks during 2014- by governorate

Governorate	Fully damaged trees by age			Partially damaged trees by age			Estimated losses - fully damaged trees			Estimated losses - Partially damaged trees		
	Seedlings (1 - 5)	More than (10)	Seedlings (1 - 5)	More than (10)	Seedlings (5 - 10)	More than (10)	Seedlings (1 - 5)	(5 - 10)	More than 10	Seedlings (1 - 5)	(5 - 10)	More than (10)
Jerusalem	126	193	67	312	112	312	641655	921382	3658620	50417.5	113792	452400
Hebron	120	60	45	110	0	110	611100	286440	477400	33862.5	0	159500
Bethlehem	1082	625	102	962	18	962	5510085	2983750	1176140	76755	18288	1394900
Ramallah	3875	100	11	92	18	92	19733438	477400	464380	8277.5	18288	133400
Jericho	0	0	0	0	0	0	0	0	0	0	0	0
Nabulus	112	62	25	371	41	371	570360	295988	3524080	18812.5	41656	537950
Salfit	1060	60	24	355	40	355	5398050	286440	1983380	18060	40640	514750
Qalqiliya	231	74	14	130	23	130	1176367.5	353276	420980	10535	23368	188500
Tubas	0	0	0	0	0	0	0	0	0	0	0	0
Tulkarm	26	0	0	0	0	0	132405	0	0	0	0	0
Jenin	254	22	2	10	4	10	1293495	105028	60760	1505	4064	14500
Total	6886	1196	290	2342	256	2342	35066955	5709704	11765740	218225	260096	3395900
10,793 trees							NIS 52,542,399.0			NIS 3,874,221.0		
Damaged trees 13,681							Estimated losses USD 16,119,034.3 ~ NIS 56,416,620.0					

- Estimated losses calculation was done by LRC team
- An olive tree is considered productive when it reaches 40 years of age.
- productivity levels are assumed to be 28 kg per tree per season

○ Attacks in pictures:



Jinsafut- Qalqiliya: Emanuel colonists set 14 aging olive trees alight on April 14, 2014





Huwwara town-Nablus: Yizhar colonists set 73 aging olive trees alight on July 13, 2014





Deir Ibziq-Ramallah: Dolev colonists burn down 30 aging olive trees on July 27, 2014





↑
Yanun- Nablus: Itamar colonists sabotage 71 aging olive trees on February 05, 2015
↓





Far'ata- Qalqiliya: colonist of Givat Gil'ad partially cut down 35 aging olive trees on April 06, 2014





Kifl Haris-Nablus: Ravaging olive grooves for the favor of expanding Areal power station on Septemebr 16, 2015

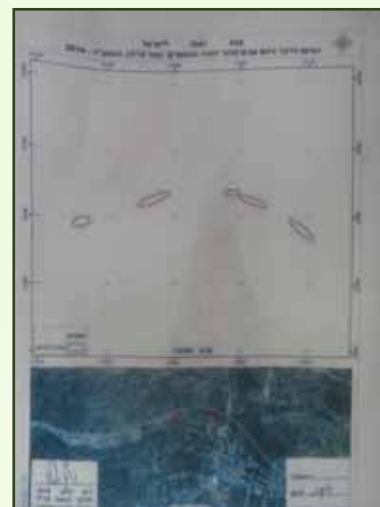




Arraba-Jenin: stealing trees after uprooting 250 seedlings on May 01, 2014

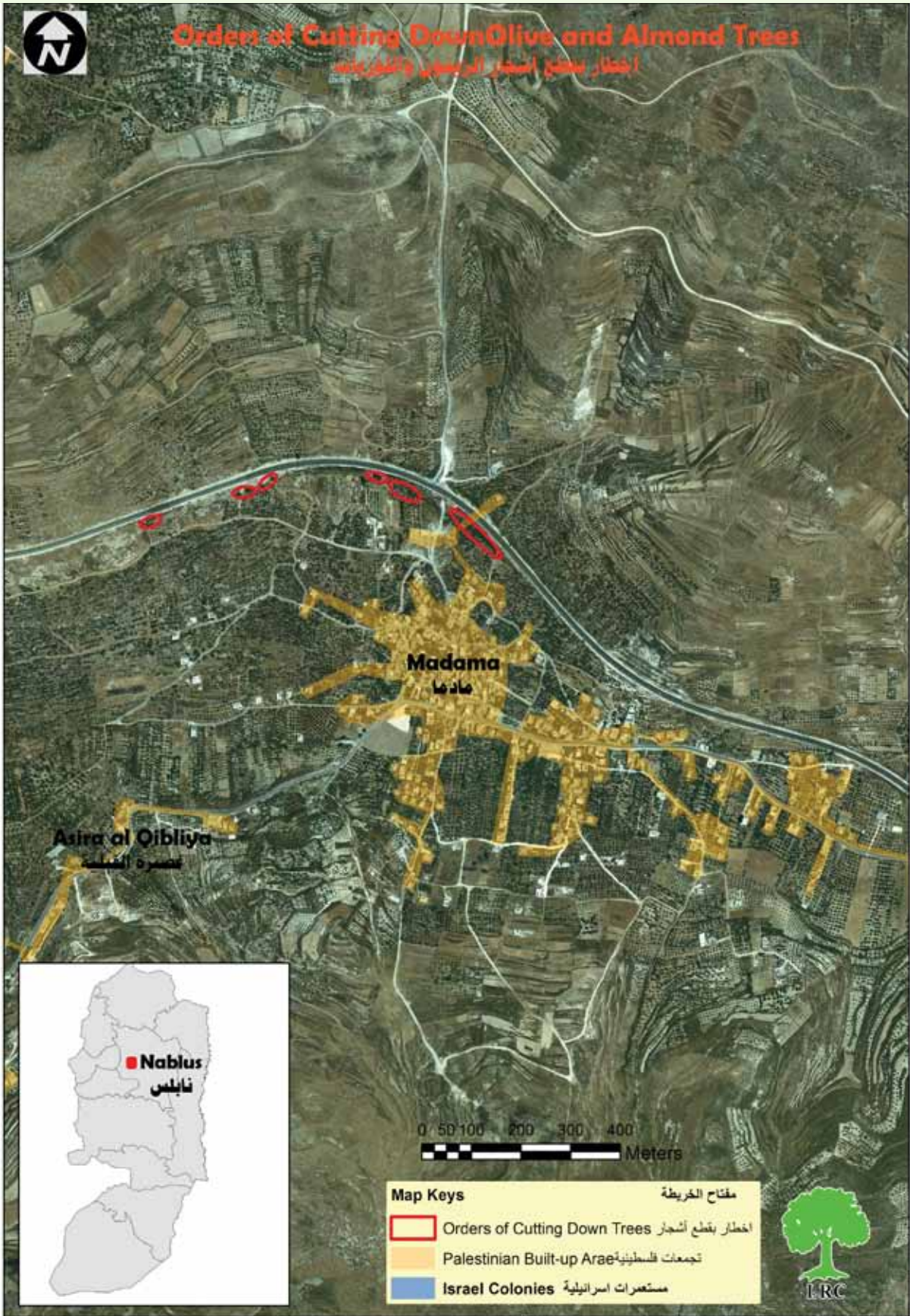


Madama, Asira al-Qabalia, and Tal villages- Nablus: a military order threatening 1000 olive trees, planted nearby the bypass road no.60, of uprooting



Some of the cut down almond trees in the area targeted by the previous order

An aerial photo illustrating the targeted trees by the pervious order



Side of Kiryat Netafim colonists



June 13, 2014, Qarawat Bani Hasan- Salfit: colonists of Kiryat Netafim pumps sewage water into Palestinian agricultural land



96% of Palestinian complaints submitted against colonists' and police attacks on olive trees, ignored.

According to the data of the Israeli Yesh Din «There is Law» association, 96% of Palestinian complaints submitted against colonists' and police attacks on olive trees between 2005-2015- ended up closed and/or not considered with no decision made in that regard and/or sentences inflicted.

The association, within its report, followed up on 246 attacks on olives since 2005, of which 4 cases ended up with written indictments inflicted on the attackers where the rest of the complaints get closed or ignored due to insufficient clues or the misidentification of attacker as claimed by the Israeli occupation authorities.

This is to say that the capacity of the West Bank Regional Police “Shai” in investigating and following up on cases is non-existent

The report showed that the village most targeted with trees torching, cutting down, sabotaging, and uprooting is the Nablus village of Burin, which is founded nearby the Israeli colonies of Yizhar and Givat Ronen. Only one case out of 35 of violations against trees was served a written indictment.

The report mentioned that: «the way Israeli police and judicial system deal with Palestinian complaints is characterized by irresponsibility and lack of professionalism».

The olive tree will keep its Arab origins despite all of the occupations' attempts at uprooting it to forge history for that history rejects its plans. Olive trees will always be the icon of the nation's identity and homeland.



