

# Palestinian Olive Agony 2012

A Statistical Report on Israeli Violations



Human Rights Department  
Land Research Center  
Arab Studies Society / Jerusalem



April - 2013



**LRC**

**Land Research Center  
Halhul - Hebron  
Palestine**

**Tel.: +970 - 2 - 2217239**

**Fax: +970 - 2 - 2290918**

**E-mail: [lrc@palnet.com](mailto:lrc@palnet.com)**

**Web Page: [www.lrcj.org](http://www.lrcj.org)**



## Palestinian Olive Agony 2012

Olive trees in Palestine are a symbol of hope, civilization, history and identity; attacks against those trees are attacks against the Palestinians very existence.

Every olive picking season, the Palestinian suffering is renewed...

Every year, Palestinian olives are targeted by radical colonists groups spreading all around the West Bank, those colonists who turned the West Bank into scorched earth with the help, protection and support of the Israeli Army who is considered as their partner in committing these crimes.

In 2012, Israeli colonists adopted a new style in their attacks against olive trees, especially what the Palestinians call “Roman” referring to centuries old trees; the colonists placed gasoline gallons inside the trees before setting it alight, destroying the tree from the inside, that in addition to the traditional ways of cutting and uprooting.

In the eyes of the Palestinians, these attacks reflected the hatred towards the blessed tree which is considered a symbol of peace and giving.

The attacks against mosques, churches and other Palestinian properties come in parallel with the attacks against the trees; a group of colonists that call itself “payback” has been responsible for these attacks as their signatures and racist fingerprints were visible whenever an attack takes place. It is evident that these attacks are systematic and organized and the fact that they are done in coordination with Israeli official bodies is undeniable.

In recent years, attacks against olive groves and farmers have not changed much; in 2012, a total of 136 attacks that took place in the West Bank including the Occupied City of Jerusalem were recorded by LRC; these attacks included:

- ◆ 136 attacks were carried out, 118 by colonists and the rest by the Israeli Occupation Army.
- ◆ 52,122 trees were damaged;
  - ★ 43,728 trees were soaked in sewage, 5,370 were uprooted or cut down, 1,872 were plowed, 1,124 trees were set alight, and 28 were killed using chemicals.
  - ★ 4594 were destroyed while the rest was partially damaged.
  - ★ 11,088 trees were 5-10 years of age.



Table 1: Ravaged trees in the West Bank (including the Occupied City of Jerusalem) in 2012:

Governorate	Ravaged trees					Perpetrators		Total
	Sewage	Uprooted/ cut down	Plowed	Burned	Toxin	The Israeli Occupation Army	Colonists	
Jerusalem	12,000	20	0	0	0	1	1	12,020
Hebron	10	1,032	607	0	28	5	19	1,677
Bethlehem	3,550	1,128	485	208	0	6	14	5,371
Ramallah	14,100	1,320	0	47	0	0	29	15,467
Jericho	0	0	0	0	0	0	0	0
Nablus	0	1,351	0	509	0	1	30	1,860
Salfit	11,140	368	280	64	0	3	12	11,852
Qalqiliya	2,928	130	500	296	0	1	12	3,854
Tubas	0	0	0	0	0	0	0	0
Tulkarm	0	21	0	0	0	1	1	21
Jenin	0	0	0	0	0	0	0	0
Total	43,728	5,370	1,872	1,124	28	18	118	52,122
	52,122					136		

Source: Field Observations – Monitoring Israeli Human Rights Violations Team – LRC

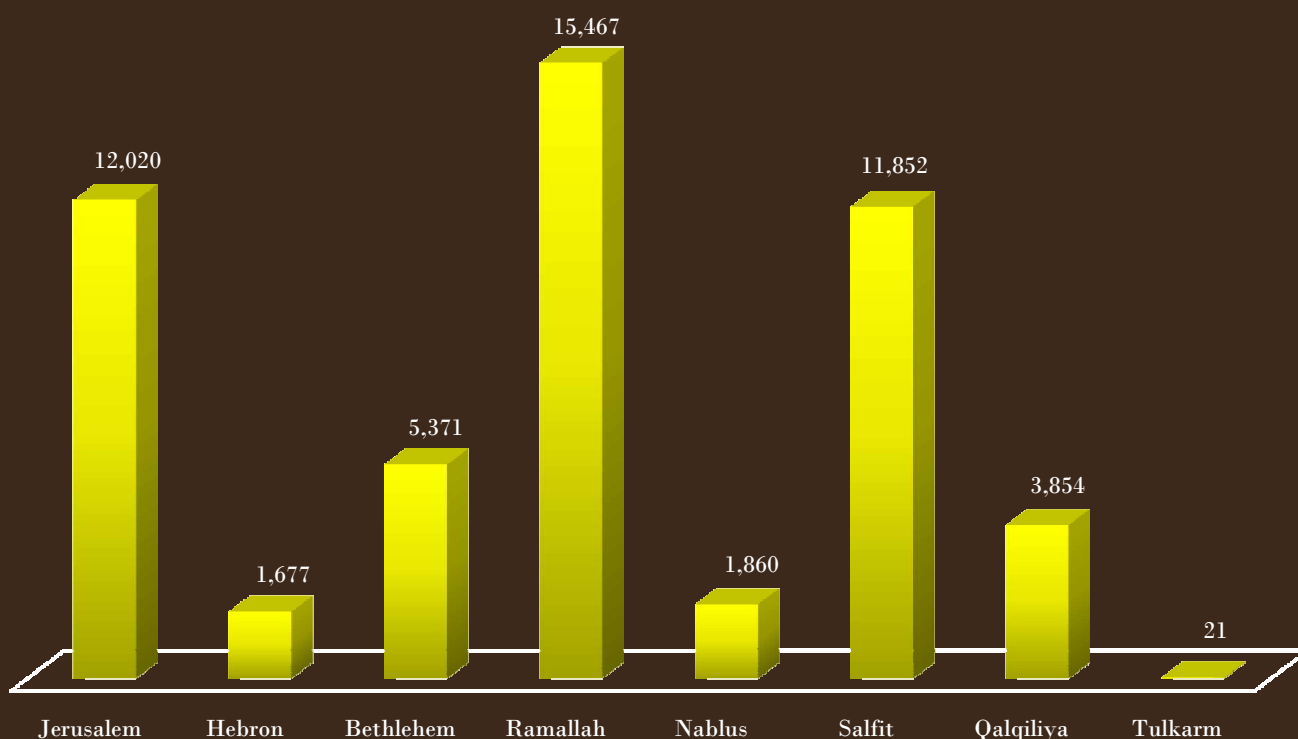






Table 2: Sewage attacks on olive fields:

Location	Colony/ military camp	Damaged area (dunum)	Damaged trees	Land	Remarks
Al Jib	Radar	1,000	12,000	Olive fields	Access subject to special permits
Jerusalem		1,000	12,000		
Karma	A military encampment near Uten'el colony	1	10	10 olive trees	A sewage stream with permanent flow
Hebron		1	10		
Nahhalin	Bitar Elit	400	2,000	Agricultural fields	A 1-km-long sewage stream with permanent flow ending in Faris Spring
Wad Sakran, Nahhalin	Bitar Elit	400	1,500	Various	A sewage stream with permanent flow ending in Faris spring
Wadi Fukin	Bitar Elit	100	50	Various	
Bethlehem		900	3,550		

Continued...



Location	Colony/ military camp	Damaged area (dunum)	Damaged trees	Land	Remarks
Abud	Ufarim	120	800	800 olive trees	A sewage stream with permanent flow
Deir Jrer	Ufra	75	1,500	Olive fields	A stream penetrating the western part of the village
Ein Yabroud	Ufra	100	500	25 dunums of olive fields and the rest are barren lands	A stream penetrating the eastern side of the village
Mikhmas	Kohav Hashiar and Migron	90	6,300	Olive fields	A stream penetrating the eastern side of the village
Turmus'ayya	Eli	40	800	Olive fields	A sewage stream with permanent flow
Sinjil	Maale Levona	150	3,000	Olive fields	Discrete pumping of sewage
Al Janya	Talmun	60	1,200	Olive fields	A sewage stream with permanent flow
<b>Ramallah</b>		<b>695</b>	<b>14,100</b>		
Bruqin/ Salfit	Ariel	131	2,000	Olive fields	A sewage stream with permanent flow
Marda	Ariel	46	920	Olive fields	A sewage stream with permanent flow
Kafr ad Dik	Ariel	200	4,000	Olive fields	A sewage stream with permanent flow
Kafr ad Dik	Eli Zahav	180	3,600	Olive fields	A sewage stream
Kafr ad Dik - al Wajh al Shami	Bedouil	18	360	Olive fields	A sewage stream
<b>Salfit</b>		<b>588</b>	<b>11,140</b>		

Continued...



Location	Colony/ military camp	Damaged area (dunum)	Damaged trees	Land	Remarks
Wadi Qana	Revava	40	500	Agricultural lands	A sewage stream with permanent flow
Wadi Qana	Yakir	13	260	Olive fields	A sewage stream
Wadi Qana	Emmanuel	45	900	Olive fields	A sewage stream
Jinsafut	Emmanuel	3	78	Olive fields	A sewage stream
Al Karnin	Emmanuel	3	70	Olive fields	A sewage stream
Beit Amin	Shiar Bitikva	55	340	17 dunums olive fields, the rest are greenhouses	A sewage stream
Al Dweir	Ezvrayim	29	580	Olive fields	A sewage stream
Al Qa'dat	Gilad Zohar	10	200	Olive fields	A sewage stream
<b>Qalqiliya</b>		<b>198</b>	<b>2,928</b>		
<b>Total</b>		<b>3,382</b>	<b>43,728</b>		

Source: Field Observations – Monitoring Israeli Human Rights Violations Team – LRC

Cutting down 27 “Roman” olive trees - 09/10/2012



Table 3: Torched olive trees - by governorate:

Governorate	Total	Damage		Age (year)			Perpetrators	
		Fully	Partially	Seedlings (1-5)	5-10	More than 10	The Israeli Occupation Army	Colonists
Jerusalem	0	0	0	0	0	0	0	0
Hebron	0	0	0	0	0	0	0	0
Bethlehem	208	0	208	0	0	208	0	4
Ramallah	47	35	12	0	0	47	0	5
Jericho	0	0	0	0	0	0	0	0
Nablus	509	225	284	0	0	509	0	4
Salfit	64	64	0	0	0	64	0	1
Qalqiliya	296	296	0	0	0	296	0	1
Tubas	0	0	0	0	0	0	0	0
Tulkarm	0	0	0	0	0	0	0	0
Jenin	0	0	0	0	0	0	0	0
<b>Total</b>	<b>1,124</b>	<b>620</b>	<b>504</b>	<b>0</b>	<b>0</b>	<b>1,124</b>	<b>0</b>	<b>15</b>

Source: Field Observations – Monitoring Israeli Human Rights Violations Team – LRC

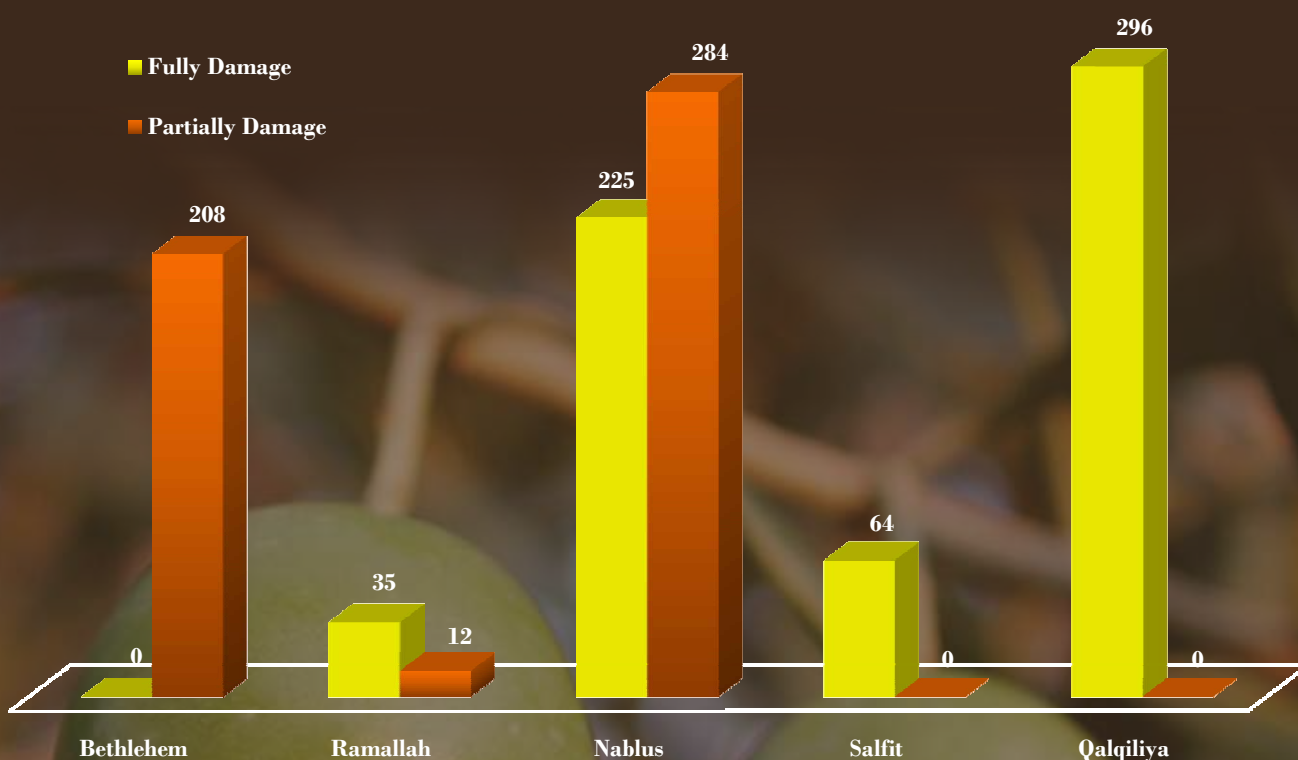




Table 4: Plowed trees - by governorate:

Governorate	Total	Damage		Age (year)			Perpetrators	
		Fully	Partially	Seedlings (1-5)	5-10	More than 10	The Israeli Occupation Army	Colonists
Jerusalem	0	0	0	0			0	0
Hebron	607	607	0	500	7	100	3	1
Bethlehem	485	435	50	150	100	235	3	1
Ramallah	0	0	0	0	0	0	0	0
Jericho	0	0	0	0	0	0	0	0
Nablus	0	0	0	0	0	0	0	0
Salfit	280	280	0	280	0	0	2	0
Qalqiliya	500	0	500	0	0	500	1	0
Tubas	0	0	0	0	0	0	0	0
Tulkarm	0	0	0	0	0	0	0	0
Jenin	0	0	0	0	0	0	0	0
<b>Total</b>	<b>1,872</b>	<b>1,322</b>	<b>550</b>	<b>930</b>	<b>107</b>	<b>835</b>	<b>9</b>	<b>2</b>

Source: Field Observations – Monitoring Israeli Human Rights Violations Team – LRC

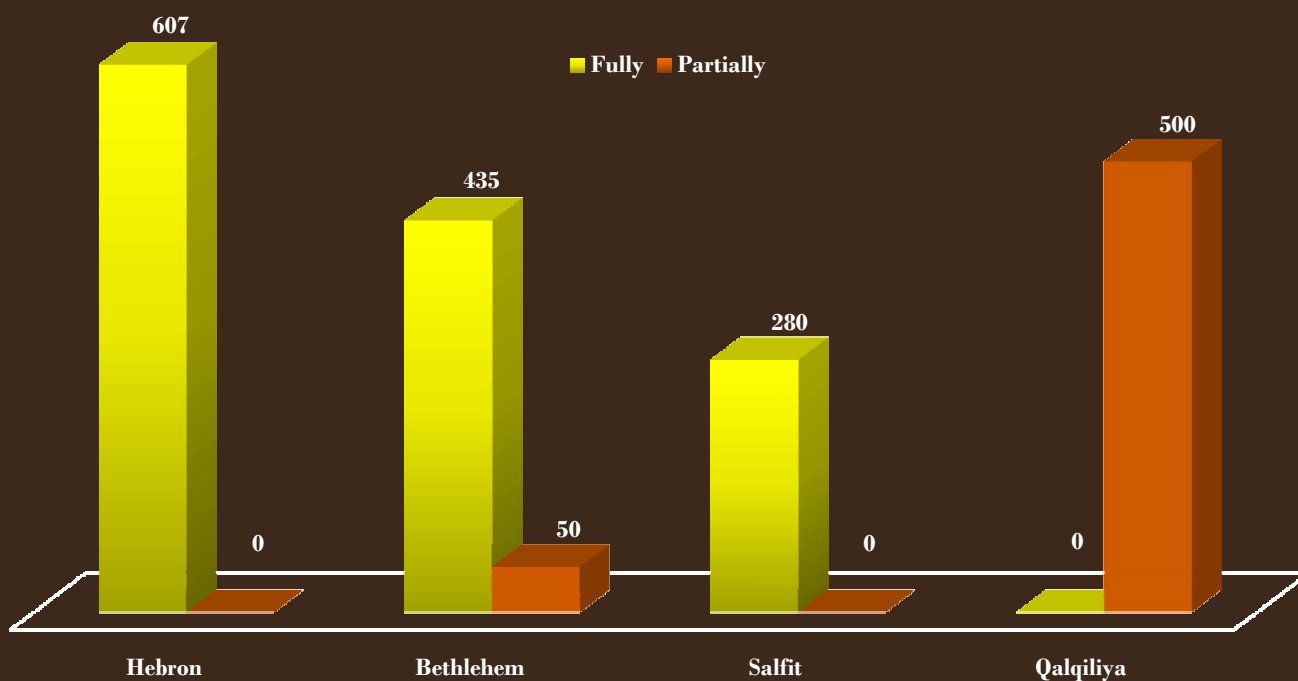


Table 5: Uprooted or cut down trees - by governorate:

Governorate	Total	Damage			Age (year)			Perpetrators	
		Uprooted	Cut down	Theft	Seedlings (1-5)	5-10	More than 10	The Israeli Occupation Army	Colonists
Jerusalem	20	20	0	0	0	0	20	1	0
Hebron	1,032	613	419	240	322	400	310	2	17
Bethlehem	1,128	678	450	300	550	100	478	3	6
Ramallah	1,320	521	799	345	173	172	975	0	16
Jericho	0	0	0	0	0	0	0	0	0
Nablus	1,351	716	635	150	367	80	904	1	26
Salfit	368	30	338	0	0	30	338	1	5
Qalqiliya	130	25	105	0	0	0	130	0	3
Tubas	0	0	0	0	0	0	0	0	0
Tulkarm	21	21	0	0	0	0	21	1	1
Jenin	0	0	0	0	0	0	0	0	0
<b>total</b>	<b>5,370</b>	<b>2,624</b>	<b>2,746</b>	<b>1,035</b>	<b>1,412</b>	<b>782</b>	<b>3,176</b>	<b>0</b>	<b>74</b>

Source: Field Observations – Monitoring Israeli Human Rights Violations Team – LRC

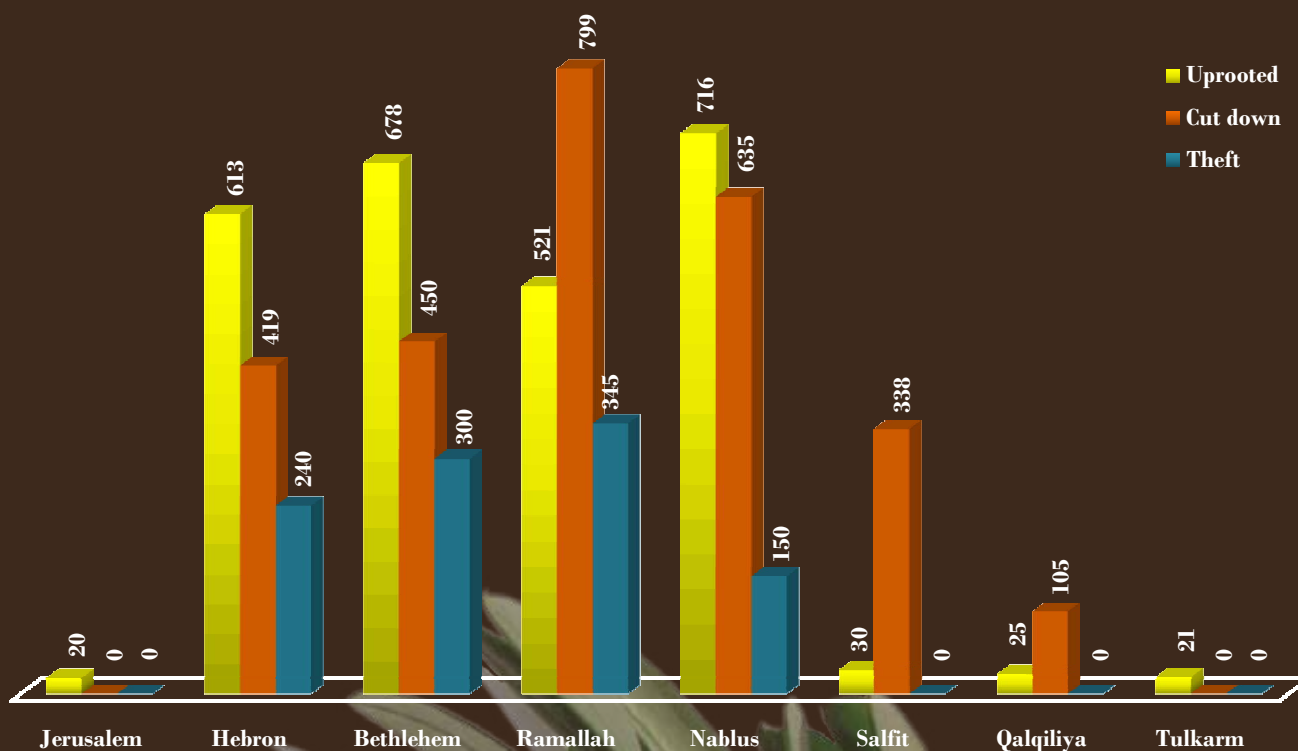




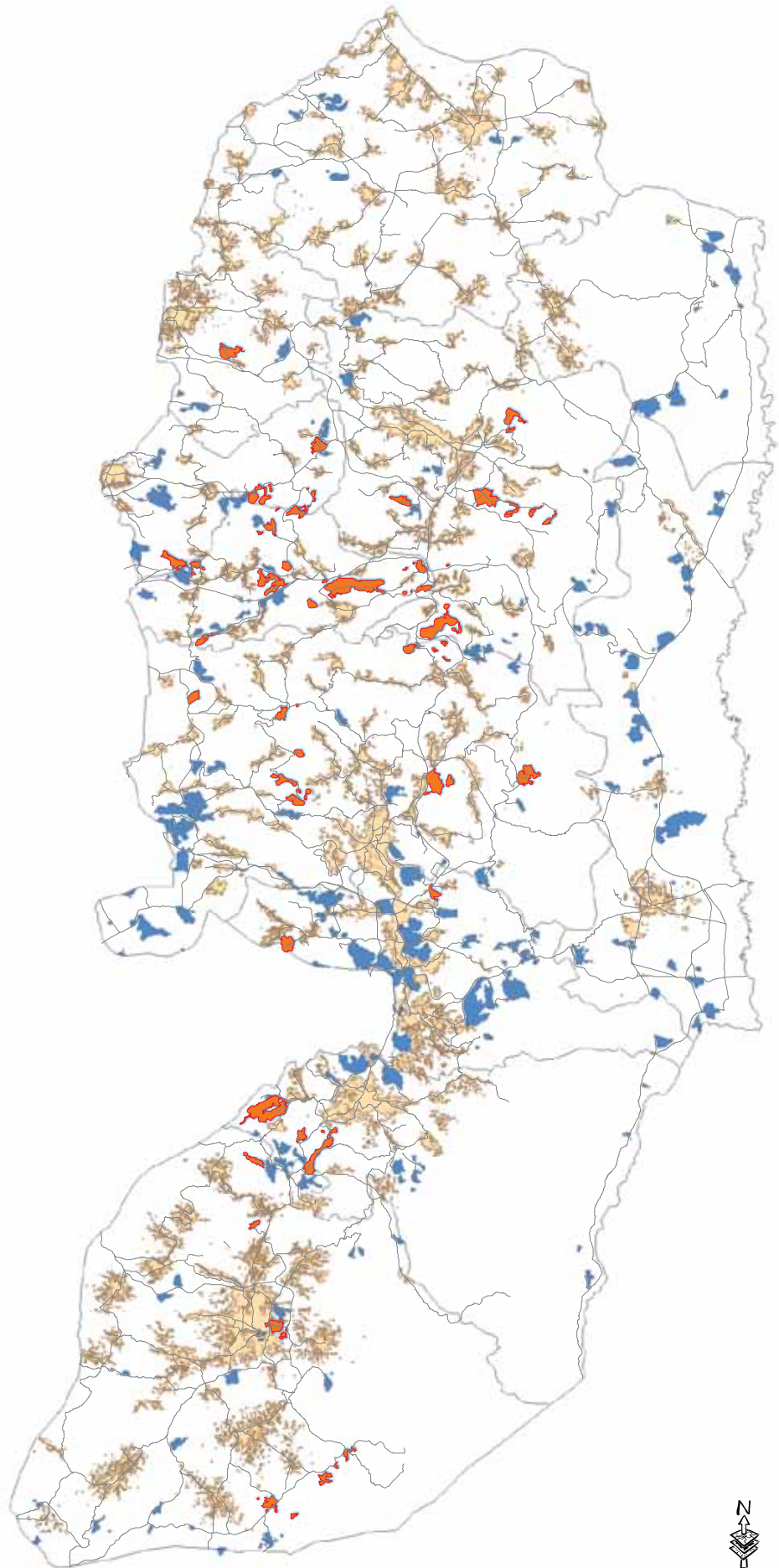
Table 6: Perpetrators and number of attacks:

No.	Perpetrator	Attacks
1	The Israeli Occupation Army	18
2	Colonists of Yizhar	11
3	Colonists of Talmun and Zet Ranan outpost	7
4	Colonists of Nahliel	7
5	Colonists of Shivut Rachel, Adi Ad and Yish Kudish	7
6	Colonists of Kfar Tipuah	8
7	Colonists of Eli, Ras Moyz and Zahav	5
8	Colonists of Kadummim	1
9	Colonists of Afrat	2
10	Colonists of Neve Daniel	3
11	Colonists of Neve Oranim and Gilad zohar	3
12	Colonists of Shi'ar Benyamin and Migron	3
13	Colonists of Alon Moreh	1
14	Colonists of Revava	3
15	Colonists of Emmanuel	5
16	Colonists of Bitar Elit	10
17	Colonists of Maon	5
18	Colonists of Beit Ein	5
19	Colonists of Karmael	2
20	Colonists of Givat Gal	1
21	Colonists of Susiya	2
22	Colonists of Halmish	3
23	Colonists of Ariel	6
24	Colonists of Ufra	2
25	Colonists of Kiryat Arbaa	1
26	Colonists of Mizadot	1
27	Colonists of Itmar	1
28	Colonists of Ehya	1
29	Colonists of Karne Shamron	1
30	Colonists of Avti Hefetz	1
31	Colonists of Radar	1
32	Colonists of Ufarim	1
33	Colonists of Maale Elvona	1
34	Colonists of Barkan Industrial Compound	1
35	Colonists of Bedouil	1
36	Colonists of Yakir	1
37	Colonists of Shiar Bitikva	1
38	Colonists of Uzfraym	1
39	Colonists of Karme Zur	1
40	Colonists of Kohav Hashayar	1
<b>Total</b>		<b>136</b>



Source: Field Observations – Monitoring Israeli Human Rights Violations Team – LRC



**Starting Point of  
Attacks on Olive  
Fields - 2012**



**Legend**

-  Roads Network
-  Perpetrators
-  Israeli Colonies
-  Pal. Builtup Area
-  West Bank



1:500,000



Table 7: Estimated losses in the olive sector due to Israeli attacks:

Governorate	Fully damaged trees by age				Partially damaged trees by age				Estimated losses - fully damaged trees				Estimated losses - partially damaged trees				Total Losses - NIS
	Seedlings (1-5)	5-10	More than 10		Seedlings (1-5)	5-10	More than 10		Seedlings (1-5)	5-10	More than 10		Seedlings (1-5)	5-10	More than 10		
Jerusalem	0	0	20		2,400	4,800	4800		0	0	86,800		1,806,000	4,876,800	6,960,000		13,729,600
Hebron	740	235	273		82	200	147		3,768,450	1,121,890	1,184,820		61,705	203,200	213,150		6,553,215
Bethlehem	625	175	313		760	1470	2028		3,182,812.5	835,450	1,358,420		571,900	1,493,520	29,40,600		10,382,702.5
Ramallah	173	172	211		2,115	3,525	9271		881,002.5	821,128	915,740		1,591,537.5	3,581,400	13,442,950		21,233,758
Jericho	0	0	0		0	0	0		0	0	0		0	0	0		0
Nablus	367	0	574		0	80	839		1,868,947.5	0	2,491,160		0	81,280	12,16,550		5,657,937.5
Salfit	280	30	64		1671	2,785	7022		1,425,900	143,220	277760		1,257,427.5	2,829,560	10,181,900		16,115,767.5
Qalqiliya	0	0	321		439,2	732	2361.8		0	0	1,393,140		330,498	743,712	3,424,610		5,891,960
Tubas	0	0	21		0	0	0		0	0	91,140		0	0	0		91,140
Tulkarm	0	0	0		0	0	0		0	0	0		0	0	0		0
Jenin	0	0	0		0	0	0		0	0	0		0	0	0		0
<b>total</b>	<b>2,185</b>	<b>612</b>	<b>1,797</b>		<b>7,467</b>	<b>13,592</b>	<b>26,469</b>		<b>11,127,112.50</b>	<b>5,619,068</b>	<b>13,809,472</b>		<b>38,379,760</b>	<b>79,656,080.5</b>	<b>0</b>		<b>148,591,493</b>
<b>Grand Total</b>	<b>4594</b>	<b>47528</b>	<b>21,847,780.5 NIS</b>					<b>57,808,300.0 NIS</b>					<b>Estimated losses = 407,099,98 USD</b>				

- Estimated losses calculation was done by LRC team
- An olive tree is considered productive when it reaches 40 years of age.
- Productivity levels are assumed to be 28 kg per tree per season with.



Colonists of Ezyon defiling olive fields in Nahhalin, Bethlehem



The Israeli Occupation Army destroyed 20 trees in Izbat Shufa in Tulkarm - April 24, 2012





The Israeli Occupation Army set 70 dunums of olive fields alight on July 1, 2012 - Jinsafut, Qalqiliya



Colonists of Talmun set olive trees ablaze in Deir Ammar



