

Pastoral Outposts; Foundation for Large Scale Land Grabs

An overview covering (2020 –2024)



Israeli Violation Monitoring Section

Land and House Rights Program

Land Research Center



Dec 2024

Contents

Introduction:.....	3
Pastoral Outposts in the West Bank and East Jerusalem:.....	4
Pastoral Colonization is supported by the Israeli Occupation Government:	10
Pastoral Colonization is a new approach to violate Palestinian lands , trees and the Environment:	12
Israeli Pastoral Colonization impact on Biodiversity in Palestinian territories / West Bank:-	13
Illegal colonists' assault on Palestinian herders and their sheep:.....	18
Pastoral Colonization drags away 38 Palestinian community:.....	21
The Occupation is Responsible for Several Environmental Violations:.....	35
In Conclusion:	36

Introduction:

Illegal Israeli colonists Population in illegal colonists in the west Bank counts to 900,000 colonists spread in 233 Illegal Israeli colonies around the West Bank and Jerusalem, in addition to 385 outposts covering mountain tops and valleys in order to control the largest possible area, illegal Israeli colonies are controlling more than 250,000 dunums , and closes off 435,000 dunums on the pretext of security, protection, buffer zones.. etc . These areas are considered a reserve for future colonial expansion.

Establishing and expanding Israeli Colonies on Palestinian lands is a vagrant violation of Palestinian people rights, and is a breach of international conventions and treaties, Charter of the United Nations , Geneva fourth convention Article 49, sixth paragraph, of the 1949 Geneva Convention IV provides: “The Occupying Power shall not deport or transfer parts of its own civilian population into the territory it occupies.” . Israel have been breaching international conventions and treaties since 1948.

Not only did the occupation devoured vast areas of lands through confiscation , fraud , announcing them state properties, absentees' properties , or confiscated for the favor of Annexation and Expansion wall , for military trainings , a new policy was introduced by the Israeli Occupation ; and that is “Pastoral Colonization” lead by Price tag groups or other colonists gangs trained to live and act like Palestinian herders , but as armed and trained snipers given the green line to shoot whenever they feel “danger” , protected by the Israeli Occupation Army , they started by bringing and setting up caravans , shacks , barns, and kiosks on Palestinian lands , then surrounding them with sieges , in order to prohibit Palestinian farmers and landowners from accessing it , then turn it into an outpost or confiscated lands on the pretext of “State properties” or “natural reserves”.

Pastoral Outposts in the West Bank and East Jerusalem:

During the past years, LRC field observation team documented assaults and attacks against Palestinian farms that included hitting, shooting, and expelling from postures, in addition to stealing and killing cattle heads, and spraying postures with poisonous chemicals, and imposing closures on postures.

Illegal Colonists choose areas nearby water springs , which are already inhabited by Palestinian Bedouin communities who depend mainly on cattle breeding for living . Pastoral outposts pose a threat on a form of life that Palestinian Bedouins have been practicing for ages. Consequently, many Palestinian farmers are now depending on cattle breeding inside farms , and have to buy feeds for their cattle instead of breeding them in postures as they used to , which made cattle breeding not economically feasible, as a result, more and more Palestinians are leaving this life style.

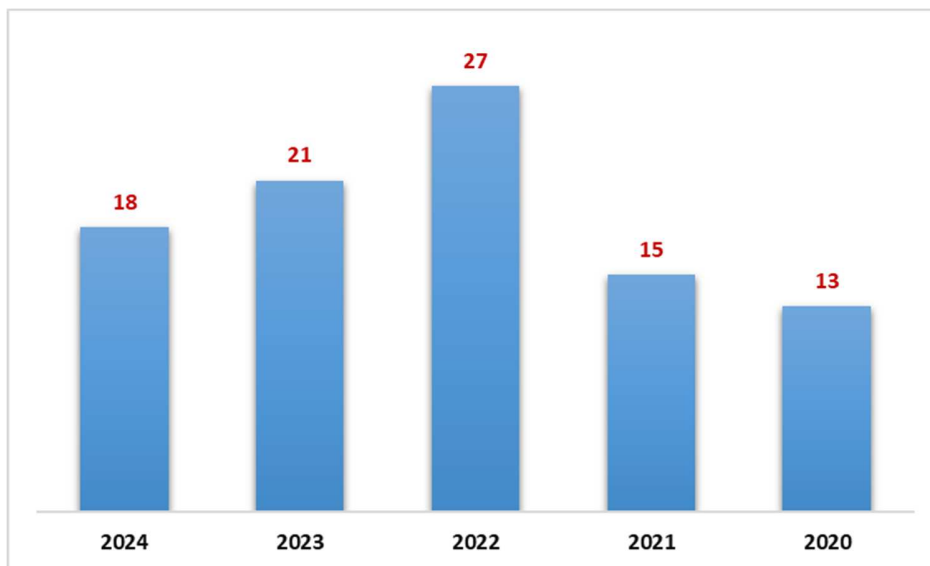
Land Research Center field observation team documented the growth of 94 new pastoral outposts in the West Bank including East Jerusalem, and in the larger pictures, the Annexation and Expansion Wall blocks the western side of the West Bank , while the outposts block the eastern side of it , which is a clear reflection of Israeli policies to take over Palestinian lands and forcedly displace Bedouins.

The following table shows number of outposts in the West Bank and east Jerusalem between 2020 – until the end of 2023 , in type and form:

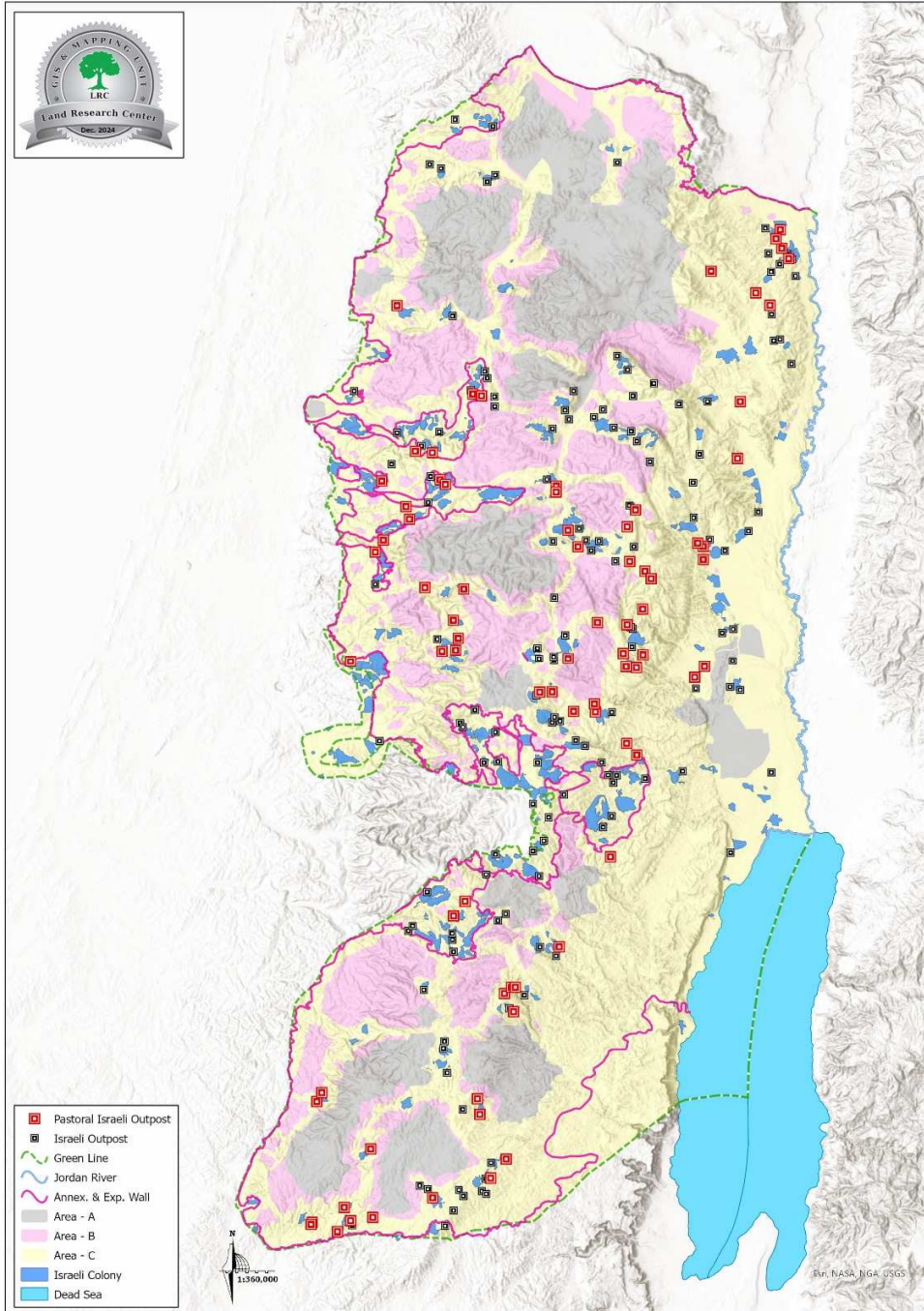
Governorate	Number of new outposts	Number of residential units / tents or caravans	Number of agricultural tents/shacks	Area of tents	Roads opening
Jerusalem	1	8	12	39	1
Hebron	10	24	30	136	7
Bethlehem	4	11	6	5	1
Ramallah	36	115	100	158	1
Jericho	8	35	27	85	2
Nablus	8	702	635	996	20
Salfit	12	1994	1983	1736	16
Qalqilya	3	290	289	422	9
Tubas	10	21	20	42	1
Tukaram	1	1	5	85	1
Jenin	1	3	3	10	1
total	94	3204	3110	3714	60

Source : Firsthand field observation - Israeli Violations monitoring section – Land Research Center .

*area 423 dunums is the total area of tents , however the targeted area covers thousands of dunums



Number of Pastoral outposts established on the West Bank and East Jerusalem – by years

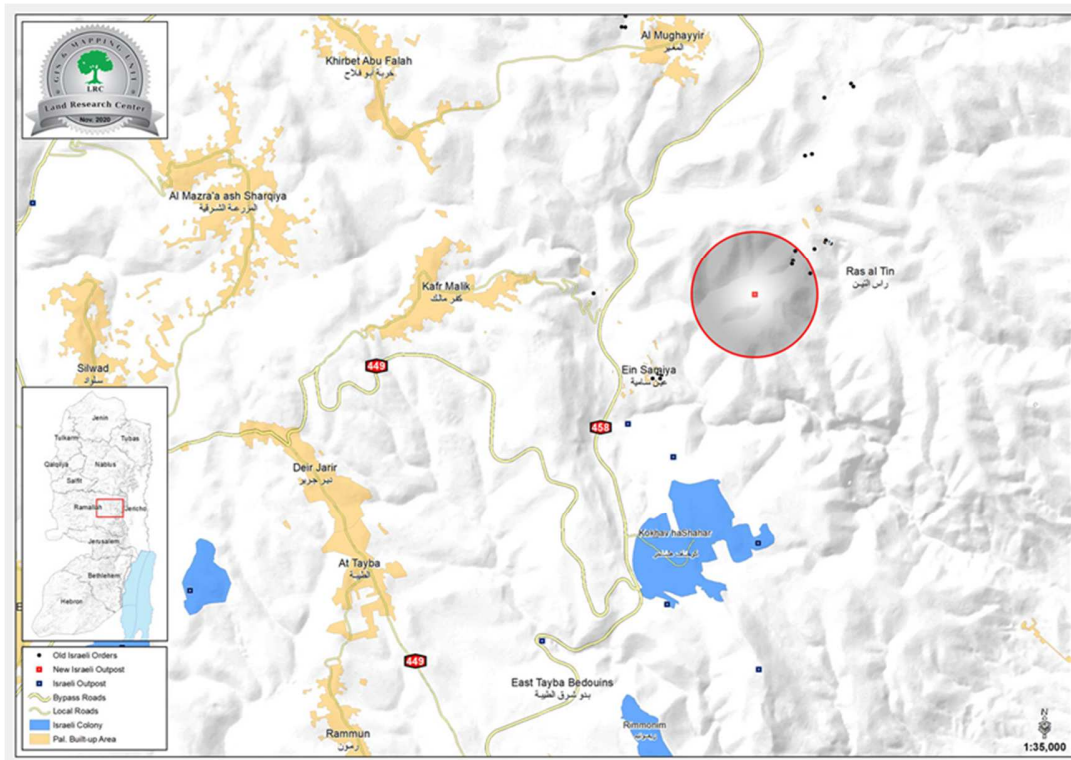


Map of Pastoral outposts in the West Bank – Dec 2024

Pastoral Outposts in Pictures:



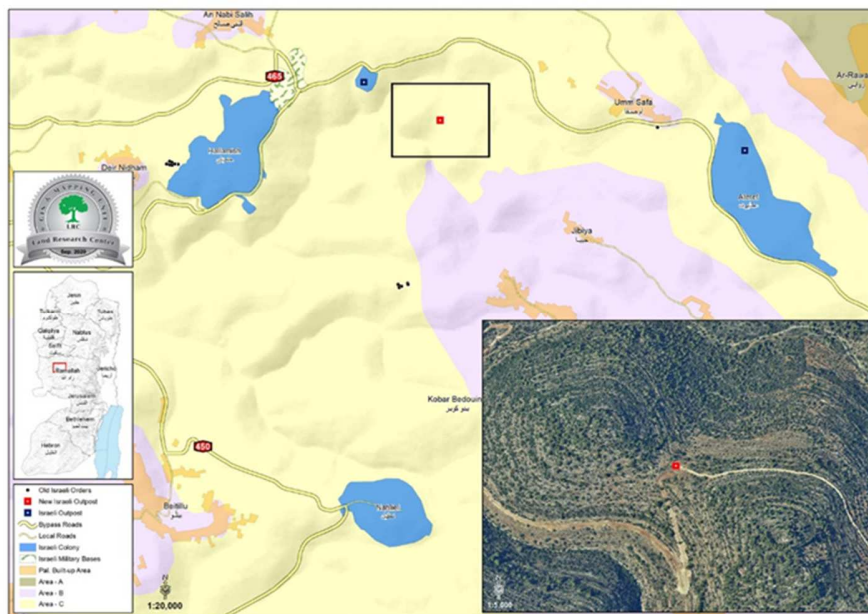
Establishing a pastoral outpost nearby Al-Ka'abneh Bedouin community – Ras At-Teen in Kufur Malik town – Ramallah governorate- in November 2020



Pastoral Outpost on Ras At-Teen Lands – Kufur Malik



Pastoral outpost on Al-Qastal mountain area and Umm Sufra village that are registered Natural Reserves – Ramallah governorate – established in September 2020



Pastoral Outpost in Umm Safa village



Illegal Colonists establish an outposts on Wad Al-Kharouba village lands in Tubas Governorate – Dec 2020

Pastoral Colonization is supported by the Israeli Occupation

Government:

Bezalel Smotrich managed to take over the Israeli Civil Administration which administrates the Palestinian Occupied Territories of 1967 , Smotrich as a leader in the Zionist religious party sat up the policies to be operated in the occupied territories without any oppositions, he even activated the high organization council to meet every month – previously meet every six months – to approve colonial schemes without any delays , and to accelerate procedures to demolish Palestinian houses , and refuse any organizational plans suggested by the Palestinian side.

Smotritch currently serves as the Minister of Finance , and his new position gives him authority to control the West Bank makes it easier for the Israeli Government to slowly and Calmly annex the West Bank lands silently, a clear and flagrant violation of international Conventions and agreements . Specifically, Hague agreement and Geneva Fourth convention in terms of *land organization, and ignoring the international law that prohibits transferring the occupying power's civilians into the occupied territory without exception.*



New positions of Smotritch being a leader of Zionist religious party and the Minister of Finance , allows him to allocate tens of millions to accelerate Colonial infrastructural projects , and to support colonial projects in Occupied Palestinian territories.

In line with that , The Israeli Civil Administration lead by Smotritch planned to legalize tens of Pastoral outpost , supporting and facilitating a new colonization approach : Pastoral colonies , the Israeli Civil Administration to legalize 30 – 35 new outpost annually , that should meet minimum standards for organizing a pastoral outpost.¹

¹ Source: Haaretz

In addition, colonial institutions use “Pastoral reserves” as a pretext for support from the government and pro-colonialism institutions , and this opens a new door for more land grabs.

On the other hand, Amanah movement leader Zaev Hefar is running a campaign to legalize pastoral colonies and lobbying the Israeli authorities to legalize more pastoral outposts, and stressed on the importance of the colonies saying: **“Pastoral and farming outposts are a more effective way than outposts of residences and construction, 50 years of construction outposts we only succeed to take over 100 Kilometer ² of West Bank Lands , while pastoral outposts in a less period of time devoured more than double the area”**. Hefar also explained that with his plan to place more farmer and herder colonists in area “C” will give them an opportunity to take over thousands of dunums even if inhabited by a small number of colonists.

A living example , is what happened in Khirbet Makhoul at the northern Jordan Valley , in 2020 a group of Meskiyot colonists decided to place a barbed fence around 300 thousand dunums of Palestinians’ farmlands and took over them with force of gun and supported by the Israeli arbitrary government.

Pastoral Colonization is a new approach to violate Palestinian lands , trees and the Environment:

The Israeli Occupation and Colonists continue policies to destroy Palestinian agricultural and pastoral lands in every way. Pastoral Colonization comes with confiscation of more lands and prohibiting Palestinian herders from accessing postures , while Israeli Illegal colonists use Palestinian lands even those planted with trees and crops as postures for their cattle , Illegal colonists also place sieges on vast areas of Palestinian lands to be used as postures, this overgrazing affects both the soil and plant cover at the targeted areas. LRC field observation team documented between (2020 –2024) hundreds of dunums of Palestinian Lands being used as postures for colonists – in addition to thousands of dunums closed with military orders to be used as a reserve for Colonization, **please see the table below:**



Colonists of “Mitzpe Ya’er” posturing in Ziad Makhamra land – Bir Al-Idd Yatta / Hebron

year	Area of agricultural lands forcedly closed to be used as postures by illegal colonists (dunum)	Area of lands sieges and closed to be used as future postures for illegal colonists (dunum)
2020	95	385
2021	83	300
2022	240	30,196
2023	300	1560
2024	820	2500
Total	1538	32,441

Source: Firsthand field observation – Israeli Violations Monitoring Section – Land Research Center (2020 –2024)

Israeli Pastoral Colonization impact on Biodiversity in Palestinian territories / West Bank:-

Israeli Colonization of the Palestinian Occupied Territories is one of the most dangerous threats on biodiversity in Palestine , colonizers would ravage lands , change its topography and completely destroy its plant cover and its flora , fauna, and soil.

The 1992 earth Summit in Rio de Janeiro defined "biodiversity" ²as "the variability among living organisms from all sources, including, 'inter alia', terrestrial, marine, and other aquatic ecosystems, and the ecological complexes of which they are part: this includes diversity within species, between species and of ecosystems".

Despite its small geographical area, State of Palestine is characterized by a great variation in topography. This variation is directly reflected on climate and the distribution and diversification of agricultural patterns. Palestine contains about 7000 species of insects, and about 2,700 kind of Vascular plants belong to 720 species of plants have been identified in historical Palestine within 115 families³, the value of the plants multiplied for its medical and therapeutic many of which were discovered by the Palestinian people living at the area for over 15 thousand years

UNDP Program in 1993 listed down factors that threat biodiversity :

- Socioeconomic factors.
- Direct Human threat local , reginal and international.
- Natural disasters.

One of Pastoral Colonization objective is to damage the soil that it wouldn't be able to grow plant anymore , driving Palestinian simple farmers out of it , illegal colonists release their cattle in Palestinian lands planted with grains , vegetables, or even postures . As a result of overgrazing , the soil is emptied from its indigenous seeds which affects and threatens both flora and fauna in Palestine . Illegal Israeli Colonists would only use land for posturing but wouldn't cultivate it, which devours minerals form the soil and renders the plot completely poor and desert-like.

Palestinians would love the land and treat it gently, they would only graze in certain season , when grazing is safe for soil minerals , and they would conserve every aspect of the wild life , believing that they are a part of nature , and making cultivation and land life a part of the Palestinian culture, a culture that conserved the Palestinian lands for centuries , to fall eventually in the hands of fanatic colonists who suck its minerals and leave it as a desert.

Pictures of Overgrazing: using postures irresponsibly by illegal colonists

² Source: A.E: Nawwaf 'Atawneh , Page 53 (Public awareness on quarries and its impact on environment and biodiversity – Issued by Land Research Center in 2002)

³ Source :A.e: Mohammed Mahasneh , Page 38 -Previous source



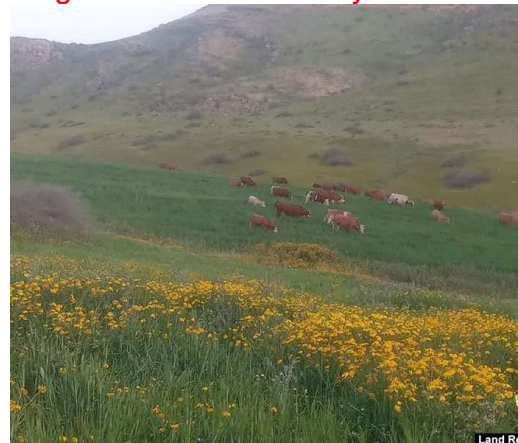
Bani Hevar Illegal Colonists using 10 dunums of Agricultural lands in Bani Na'im as postures – Hebron governorate / January 2021



An Israeli illegal colonist posturing in a land belongs to farmer Rajeh Yamin – Jit village / Qalqilya governorate – January 2023



Illegal colonists herding in Palestinian wheat fields in Yanoun village / Nablus Governorate



Illegal colonists grazing field crops in a private palestinian agricultural land in Umm Al-Quba village – Ar-Ras Al-Ahmar / Tubas governorate April 2022



Itamar colonists graze Olive groves in 'Awarta village – Nablus governorate ,
April 2020



Illegal colonists in As-Suweida area release their cattle irresponsibly to graze in 12
dunums of wheat fields – Tubas governorate – February 2023



Illegal colonists of the Jordan Valley set up a metal siege around 139 dunums of pastoral lands in Wad Al-Malih, Al-Faw and 'Ein Al-Hilweh areas in order to deny herders in Palestinian communities to access the location and herd their sheep



Colonists gang “Sons of the hells” in coordination with the Israeli Civil Administration set up a metal siege on 90 dunum of Khaled Makhoul and Khaled Samra lands in Ash-Shuwaioier area, January 2022 – Tubas governorate

Illegal colonists' assault on Palestinian herders and their sheep:

The following table shows colonists assaults on farmers and their sheep – by years:

year	Number of farmers directly assaulted	Number of farmers attacked and / or denied access to postures	Number of cows / cattle heads stolen	Number of cows / cattle heads (ran over by car , poisoned , killed)
2020	121	377	282	88
2021	110	300	36	40
2022	155	357	122	47
2023	315	510	120	41
2024	366	2200	3062	140
total	1067	3744	3622	356

Source : firsthand field observation – Land Research Center for years (2020 – 2024)

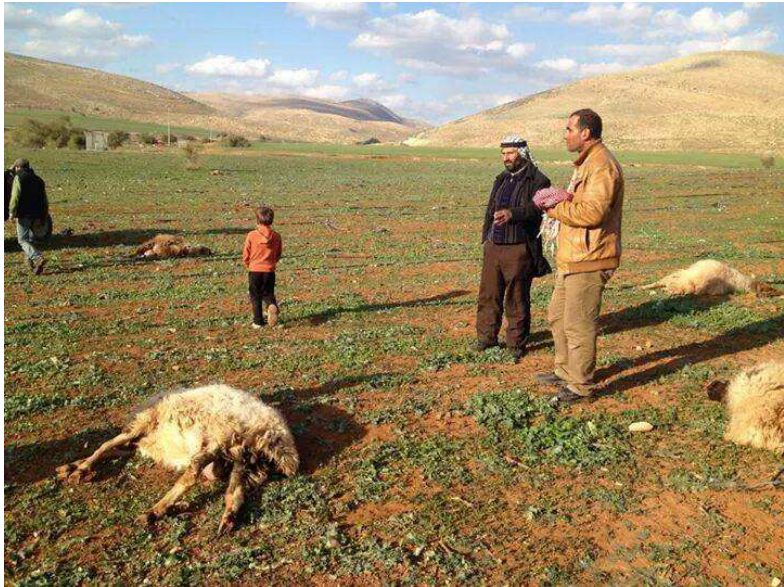
520 heads of sheep were killed (poisoning postures , ran over be a vehicle, killing with a sharp tool)



An Israeli illegal colonist runs over a number of cattle heads in 'Ein Al-Hilweh / Tubas governorate – March 2021



Illegal colonists Poison 53 heads of Sheep in Al-Auja area / Jericho governorate – July 2020



Illegal Colonists poison 15 heads of sheep in 'Aqraba area – Nablus governorate /01/05 2015

Noteworthy , Pastoral colonization is a dangerous phenomena , and the mentioned numbers above is only what was observed and documented by Land Research Center . In reality , every community has its story of suffering: they were denied access to pastures , and their cattle heads are threatened of stealing and killing , the water spring that they used for their sheep and crops is now controlled by illegal colonists , as a result and due to the high prices of buying feed for the cattle , many decided to sell their sheep and look for another source of income , and this poses a true threat on livestock , and Bedouins in Palestine who's life depend mainly on cattle breeding for living.

Related links:

- After controlling pastures.. Pastoral outposts control destroy water reservoirs in Masafer Yatta / south hebron – [Press here](#).
- Palestinian Farmer Fareed Hamamdeh from Yatta town is an example of the awful torture that Palestinians are experiencing under Pastoral colonization, for more information about Hamamda story look at the following report: “[Pastoral Colonization in Yatta – South Hebron](#).”

Pastoral Colonization drags away 38 Palestinian community:

Since the beginning of war on Gaza 7/10/2021, illegal colonists increased their radical assaults in Palestinian communities especially Bedouin and rural, who depend primarily on cattle breeding for living, the communities received death threats in case they were not displaced, herders were not allowed to take their sheep in pastoral lands in Palestinian communities, and took control over a part of it to construct, They also target water sources, either by seizing them, denying access to them, cutting water pipes, or contaminating and poisoning them. In addition, they stole sheep from the citizens, burned and destroyed the barns, and attacked the herders. All of this led to the displacement of 38 communities. Below are the main assaults that targeted cities and villages in the West Bank that led to the displacement of these communities – 07/10/2023 – 31/12/2024 :

- Establishing 22 pastoral outposts on large areas of lands.
- 61,000 trees were targeted of which 55000 were completely destroyed.
- 3700 dunums were targeted either by arson attacks , ravaging, poisoning with chemicals, drowning with waste water.
- 66.800 dunums were either announced confiscated , natural reserves or governmental properties.

The Israeli occupation demolished 316 agricultural facilities as follows:

- 72 agricultural barns were demolished, housing 1,775 heads of livestock and 20 horses.
- 54 agricultural rooms, used for storing tools and equipment in agricultural lands, were destroyed, including the land and agricultural equipment inside them.
- 70 retaining walls/fences, with a total length of 8,357 meters, which surrounded 2,100 dunams of land, were demolished.
- 28 greenhouses, covering several dunams, planted with vegetables and field crops, were destroyed.
- 4 agricultural roads were bulldozed, directly affecting 500 dunams and indirectly impacting hundreds of additional dunums.
- 88 wells, ponds, or reservoirs, with a total capacity of 2,258 cubic meters, which were used for irrigating livestock and 2,500 dunams of agricultural land, were destroyed.

Illegal Settler Attacks on Agricultural Facilities since the beginning of War on Gaza:

- **Settlers attacked 563 agricultural facilities since the beginning the war:**

142 sheep barns, with the following damages:

- 420 heads of sheep were stolen.
- 10,000 poultry were killed due to arson attacks on farms conducted by settlers.
- 2,500 heads of livestock were harmed either by thirst due to the loss of water sources or by attacks on the barns.
- 460 heads of livestock were killed due to settler assaults on the barns.

- 120 agricultural rooms were damaged, either by arson attacks, destruction, or theft of contents such as agricultural tools, water pumps, electrical equipment, or solar panels, etc.
- 61 retaining walls and fences were damaged, with a total length of 13,644 meters, surrounding more than 150 dunams of land.
- 240 wells, reservoirs, which used to provide water for thousands of dunams. In addition, hundreds of sheep, were attacked either by poisoning, destruction, or complete denial of access, including draining and puncturing water tanks.

Settler Attacks on herders, Farmers since the beginning of war on Gaza :

- 366 herders were directly attacked (beaten, detained, sprayed with pepper gas, or attacked by dogs).
- 2,100 farmers were directly attacked while they were at their land and prevented from returning to it.
- 520 heads of livestock were killed (poisoning of pastures, running over, or killing with sharp tools).
- 3,062 heads of livestock were stolen by settler outposts.
- Hundreds of sheep were also attacked.
- 33 residential communities were closed off, preventing residents from moving freely.
- Families were threatened with death if they did not leave.
- Some areas were declared “military closed zones” or “fire zones.”
- Water was cut off from several residential communities.
- 1,200 trees, mostly olive trees, were broken or destroyed due to grazing by settler livestock.
- 820 dunams of agricultural land, planted with field crops, were used as grazing grounds for settler sheep.

All of these assaults led to forced displacement for several Palestinian communities, the following tables shows number of displaced communities and families – by governorate:

gov	town	community	Number of displaced families	Number of displaced members	Including children	notes
Jerusalem	Hizma	Barriyat Hizma	2	18	4	Complete displacement – moved to a near by location close to Hizma – due to repeated assaults against facilities.
Hebron	As-Samou'	Ar-Ratheem	8	20	11	Complete displacement – after repeated assaults , cutting water pipes , prohibiting access to water resources
	Yatta	Susiya	2	18	9	Partial displacement – they moved to a nearby location after closing the road that leads to the village and destroying water reservoirs and prohibiting water arriving at the village / displacement during the war
	Sa'ir	Al-Qanub	9	40	24	Complete displacement – they moved to ash-Shuyukh and Sa'ir , after colonists repeatedly assaulted them, stole their sheep , olives , destroying their properties , hitting them , and threatening to kill them – during the war period.
	Tarqumiya	Khirbet At-Tayiba	24	122	72	Threats from colonists and army on the pretext that the area

gov	town	community	Number of displaced families	Number of displaced members	Including children	notes
	Adh-Dhaheriya	Zenuta	37	310	100	Complete displacement – they moved to Adh-Dhaheriya after colonists demolished 10 residential facilities repeatedly – during war period
	As-Samou'	Etairiya	2	31	20	Complete displacement following threats from Colonists – during war period
	As-Samou'	'Anizan	4	35	11	Complete displacement – during war period
	As-Samou'	Maqтал Moslem	1	8	5	Complete displacement – they moved to As-Samou' after the people of the area were subjected to demolition and physical assaults – during war period
	Sa'ir	Joret Al-Khail	19	70	24	Complete displacement – they moved to the border area of the khirbet and some of them moved back to Sa'ir
Bethlehem	Taqou'	Barriyat Taqou'	8	69	25	Complete displacement – they moved to Tuqu' due to colonists' assaults against families, facilities, and cattle heads – displacement during war.
	Kisan	Khallet Al-Humra	2	11	5	Complete displacement – they moved to Kisan – displacement took two phases before and after the war
Ramallah	Al-Mughayyir	Al-Qaboun	12	86	26	Complete displacement- they moved to Al-Mughayyir after adding

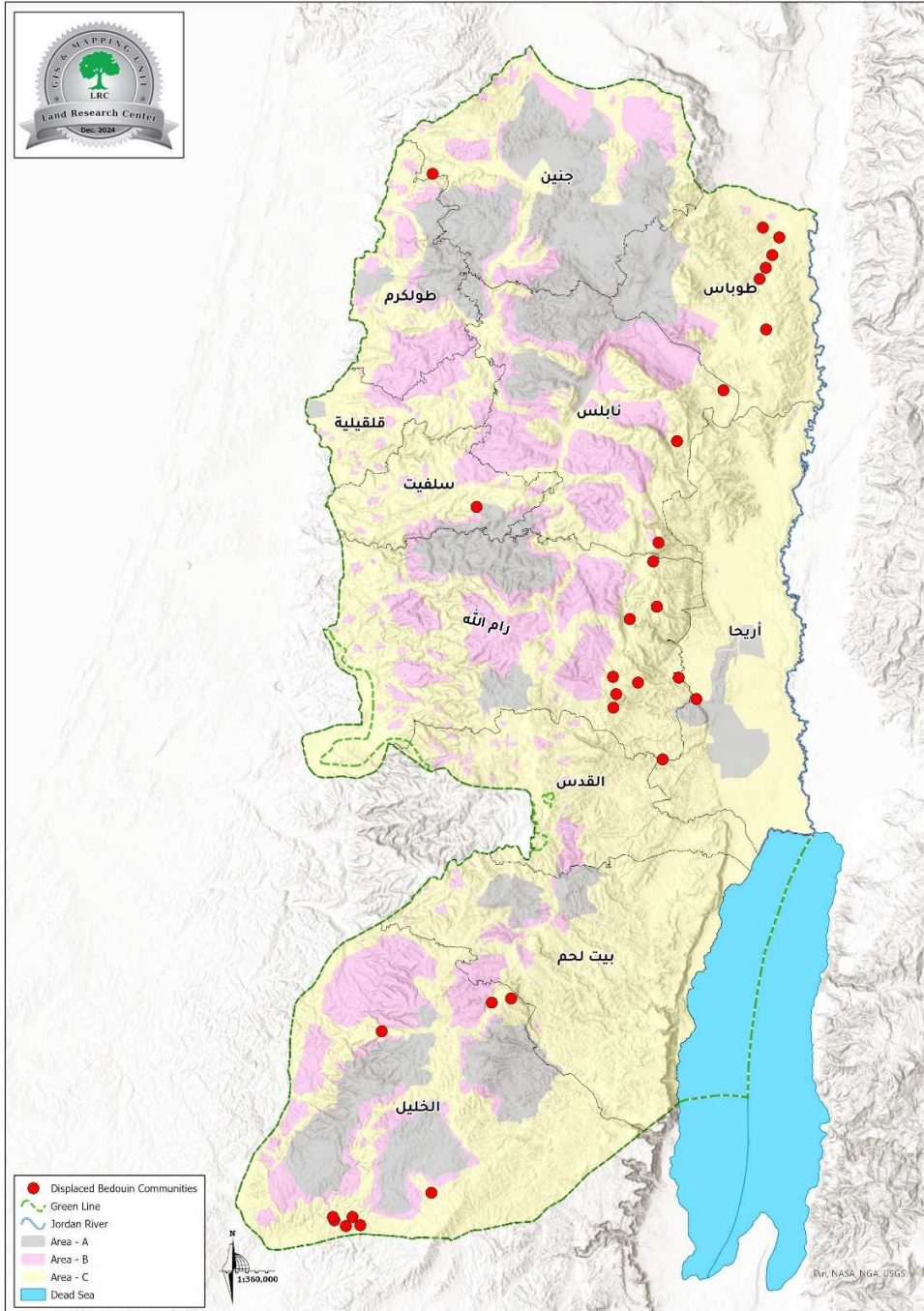
gov	town	community	Number of displaced families	Number of displaced members	Including children	notes
						an outpost nearby the community , and colonists of the outpost started carrying out daily assaults against people of the community- displacement before the war
	Al-Mughayyir	Jaba'it	8	25	10	Complete displacement- they moved to Al-Mughayyir after the closure of the entrance of the compound with dirt blocks, and the hardship of movement and repeated colonists assaults – displacement during war
	At-Tayba	Al-Ka'abneh – Al-Buqa'a community	6	42	4	Complete displacement – they moved to At-Tayba after being targeted by colonists with physical assaults and cattle looting – during the war
	Deir Dibwan	Maghayyir Ad-Deir community	12	72	30	Partial displacement – they moved to Deir Dibwan – Displacement during war
	Deir Dibwan	Wad As-Seeq	34	190	45	Complete displacement – but few men remained steadfast at the community to protect their houses from being taken over by colonists , women and children moved to Deir Dibwan and nearby locations – displacement during war
	Kufur Malik	Ras At-Teen	11	53	35	Complete displacement – they moved to Al-

gov	town	community	Number of displaced families	Number of displaced members	Including children	notes
						Mughayyir and Kufur Malik – after the occupation forces demolished their houses responding to colonists' requests- displacement during war.
	Kufur Malik	'Ein Samiya	22	200	88	Complete displacement- they moved to kufur malik , following a military order to demolish a school – before war
Jericho	Al-Auja	Al-Mlihat Bedouin community	6	30	12	Partial displacement during the war
	Al-Mu'arajat Al-Fouqa	'Arab Al-Ka'abneh Bedouin community	22	154	66	Complete displacement – during the war
	Fassayil	Al-Wad Al-Ahmar community	4	20	7	Complete displacement
	Wad Al-Qilt	Al-Hathrora	5	30	15	Complete displacement – moved to Fasayil Al-Fouqa in Jericho due to repeated assaults from colonists and destroying their belongings – during war period
Nablus	An-Nasariya	An-Nasariya	5	25	13	Complete displacement – they moved to Fasayil Al-Fouqa in Jericho due to repeated assaults and threats of killing – during war period
	Al-Humra	Al-Mkaser and Thera' al-Oud	9	54	21	Partial displacement – during war period

gov	town	community	Number of displaced families	Number of displaced members	Including children	notes
	Tana	Tana and Aja'awana	18	126	63	Complete displacement – they moved to Tana to a nearby location and after their displacement – during war period
	Dhafer Aj-Jabal	'Ein Ar-Rashash	18	85	25	Complete displacement – they moved to Duma, due to repeated assaults and prohibiting water – displacement during war
	Duma	'Ein Az-Zera'a	4	28	12	Complete displacement – they moved to Duma during war
	'Ein Shible	'Ein Shible	3	24	14	Partial displacement – due to repeated assaults against people of the community , setting houses on fire , stealing solar panels – displacement during war
Salfit	Al-Mahajer	Bedouins of Al-Mahajer	13	68	28	Complete displacement – during war period
Tubas	Al-Malih	Khallet Khader	3	15	9	Partial displacement – they moved to Al-Malih due to repeated colonists' assaults against people of the community and their cattle period – during war period
	Al-Malih	Khirbet Samra	2	13	7	Partial displacement – after colonists hitting people of the community and they were displaced – during war period
	Al-Malih	Al-Farisiya – Naba'a Al-hazzal Community	1	7	1	Partial displacement – they moved to Al-Malih due to repeated colonists assaults against people and their

gov	town	community	Number of displaced families	Number of displaced members	Including children	notes
						cattle – during war period
	Tel Al-Himeh	Tel Al-Himeh	1	4	0	Partial displacement – during war period
	Mkhoul	Mkhoul	4	29	16	Partial displacement—they moved to Al-Malih due to colonists continuous assaults on people of the community and their cattle – during war period
	Al-Malih	Wad Al-Fao	1	8	3	Partial displacement – they moved to Al- Malih due to colonists setting their tents in fire in extreme cold – during war period
	Al-Malih	Umm Al-Jamal	9	45	18	Complete displacement during war
Jenin	Al-Farasin	Al-Farasin	4	24	13	Partial displacement – they moved nearby Ya'abad – during war period
total			355	2209	891	

Source: Filed observation team – Land Research Center -2024



Map shows locations of displaced communities - 2024

Scenes from Occupation colonists and forces assaults against lands and facilities:



Nablus Governorate – Qusra town: Colonists of “Majdolim” cut down 100 trees – March 2024



Nablus Governorate – Beit Imreen : Colonists of “Homesh” cut down trees and demolish agricultural rooms – September 2024



Hebron Governorate – Aj-Juwaya / Yutta: agricultural cistern before demolition that irrigates 7 dunums planted with olives – built 12 years ago – August 2024



Hebron governorate – Aj-Juwaya / Yatta : during demolition of agricultural cistern – August 2024



Ramallah governorate – Sinjil town: Colonists of “Jiva’at Haro’a” trying to control an agricultural cistern – August 2024



Jerich Governorate – Al-‘Auja village- Arab Al-Mulihat community : Colonists of an outpost set fir to 82 heads of sheep – September 2024⁴

⁴ Photos: Palestinian news and information agency – Wafa.



Tubas Governorate – Al-Buqaiya valley – number of sheep heads die due to explosion caused by remains of military trainings – October 2023



Jening governorate – ‘Arraba town: Sheep barn emptied after “Mivo Dotan” colonists stole 120 heads of sheep from farmer ‘Imad Zuhair

The Occupation is Responsible for Several Environmental Violations:

Violating international and Humanitarian Laws:

The Occupation state violates environmental protection laws especially articles 35 and 55 from the protocol additional to Geneva fourth convention of 1977 which states:

- Article 35. BASIC RULES. 1. In any armed conflict, the right of the Parties to the conflict to choose methods or means of warfare is not unlimited.
2. It is prohibited to employ weapons, projectiles and material and methods of warfare of a nature to cause superfluous injury or unnecessary suffering.
3. It is prohibited to employ methods or means of warfare which are intended, or may be expected, to cause widespread, long-term and severe damage to the natural environment.
- Article 55. PROTECTION OF THE NATURAL ENVIRONMENT. 1. Care shall be taken in warfare to protect the natural environment against widespread, long-term and severe damage. This protection includes a prohibition of the use of methods or means of warfare which are intended or may be expected to cause such damage to the natural environment and thereby to prejudice the health or survival of the population.
2. Attacks against the natural environment by way of reprisals are prohibited.
- Violating the following international conventions and treaties:
- Resolution adopted by the General Assembly on 21 December 2016, (71/247) Permanent sovereignty of the Palestinian people in the Occupied Palestinian Territory, including East Jerusalem, and of the Arab population in the occupied Syrian Golan over their natural resources.
- The general assembly also Expressed its grave concern about the extensive destruction by Israel, the occupying Power, of agricultural land and orchards in the Occupied Palestinian Territory, including the uprooting of a vast number of fruit-bearing trees and the destruction of farms and greenhouses, and the grave environmental and economic impact in this regard,

- Practicing violations that are stated as war crimes in Rome Statute of the International Criminal Court , such as: (iv) Intentionally launching an attack in the knowledge that such attack will cause incidental loss of life or injury to civilians or damage to civilian objects or widespread, long-term and severe damage to the natural environment which would be clearly excessive in relation to the concrete and direct overall military advantage anticipated;
 - And (xx) Employing weapons, projectiles and material and methods of warfare which are of a nature to cause superfluous injury or unnecessary suffering or which are inherently indiscriminate in violation of the international law of armed conflict, provided that such weapons, projectiles and material and methods of warfare are the subject of a comprehensive prohibition and are included in an annex to this Statute, by an amendment in accordance with the relevant provisions set forth in articles 121 and 123.
- Rio Declaration on Environment and Development , The environment and natural resources of people under oppression, domination and occupation shall be protected.

In Conclusion:

The Israeli Occupation invents new ways to control Palestinian Lands, whenever they see Palestinians holding and steadfast on their lands despite colonists' assaults, the occupation would bring in herders and train them to take over postures and attack Palestinian herders and farmers whenever they try to access their lands.

Pastoral colonies impose a great threat on Human, livestock, Land, biodiversity, and not only that it poses a violation of international law. However, in Israel there is a unique and different application of laws; when a crime is carried out against a Palestinian it is forgiven and sometimes rewarded.

In Palestine, the occupation is the largest threat on Environmental justice, and climate change mitigation and adaptation, consequently the occupation stands against achievement of world food security, in addition to its effect on environmental balance and land exploitation to serve human needs and achieve international developmental objectives.